

International LT-RH-MV-HV PeopleNet Connected Gateway™ Install

Install Overview



2023 RP1226 Option



If present, the RP1226 is on the doghouse behind and below the cup holders.

- An RP1226 option was added in model year 2023. If available, this is the preferred install method, including power and engine data in one.
- This is not in all vehicles. Consult your dealership to determine whether it is present.
- If you are using the RP1226, order part L-016-0644 (RP1226 Cable).

On-Dash 9-pin Installation Steps

- 1) Connect the PCG Main Cable to the vehicle diagnostic port.
- 2) Route the PCG cable up the side of the dash, making sure it is clear of the door.
- 3) Clean a spot on top of the dash using an alcohol swab and a paper towel, then attach the PCG using the tape provided.
- 4) Mount the display-See below for options and steps.
- 5) Route the display cable to the connectors on the PCG cable, then connect both the 2-pin power and blue barrel connections.
- 6) Bundle the cables so they cannot interfere with the safe operation of the vehicle.
- 7) Turn the vehicle key ON to boot the system, then follow the PCG Activation steps.

In-Dash 9-pin Installation Steps

- 1) Connect the PCG Main Cable to the Y cable and connect the Y cable to vehicle, leaving the Y-cable male as the new vehicle diagnostic.
- 2) Route the PCG cable through the dash to the mount location shown below.
- 3) Clean the PCG mounting space using an alcohol swab and a paper towel, then attach the PCG using the tape provided, making sure the logo is facing the sky.
- 4) Mount the display-See below for options and steps.
- 5) Route the display cable to the connectors on the PCG cable, then connect both the 2-pin power and blue barrel connections.
- 6) Bundle the cables so they cannot interfere with the safe operation of the vehicle.
- 7) Turn the vehicle key ON to boot the system, then follow the PCG Activation steps.

Dash Disassembly

2 Pop off the panel around the gauge cluster.

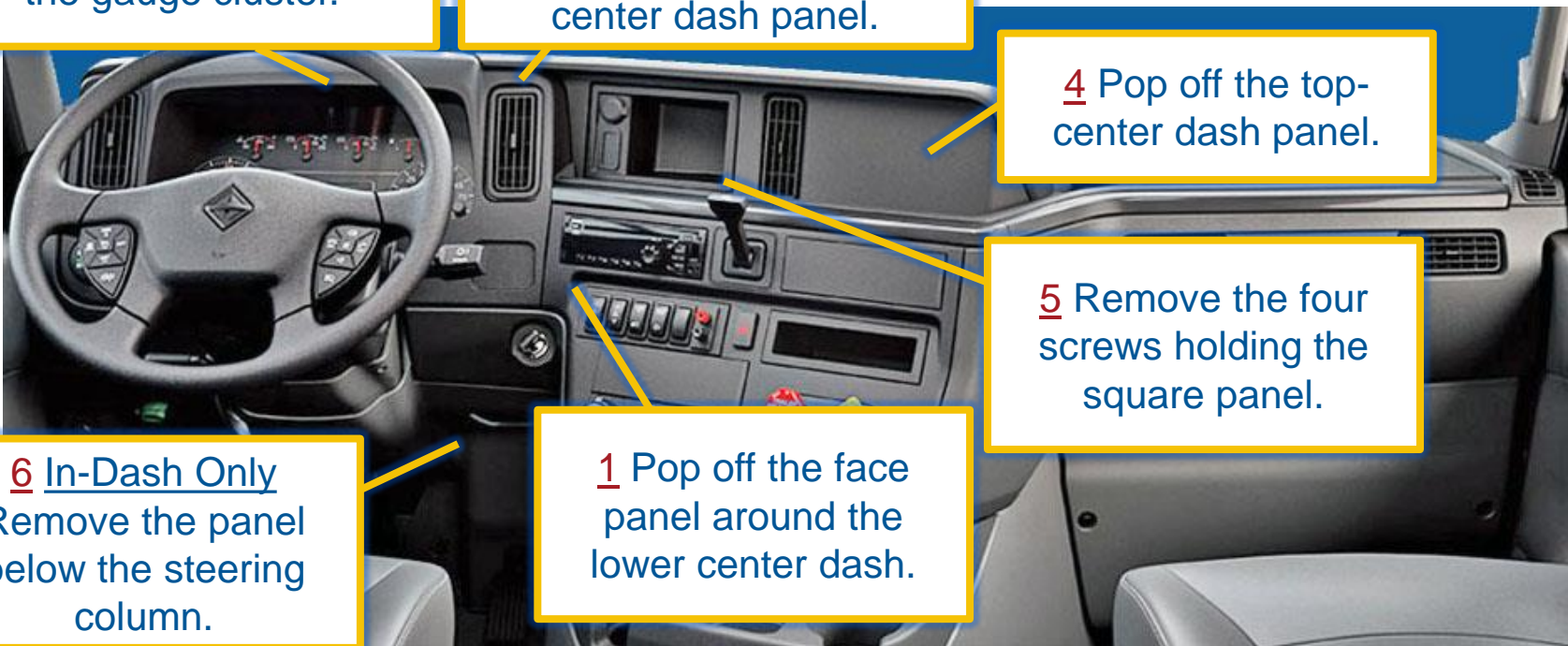
3 Remove the screw holding the left of the top-center dash panel.

4 Pop off the top-center dash panel.

5 Remove the four screws holding the square panel.

6 In-Dash Only
Remove the panel below the steering column.

1 Pop off the face panel around the lower center dash.



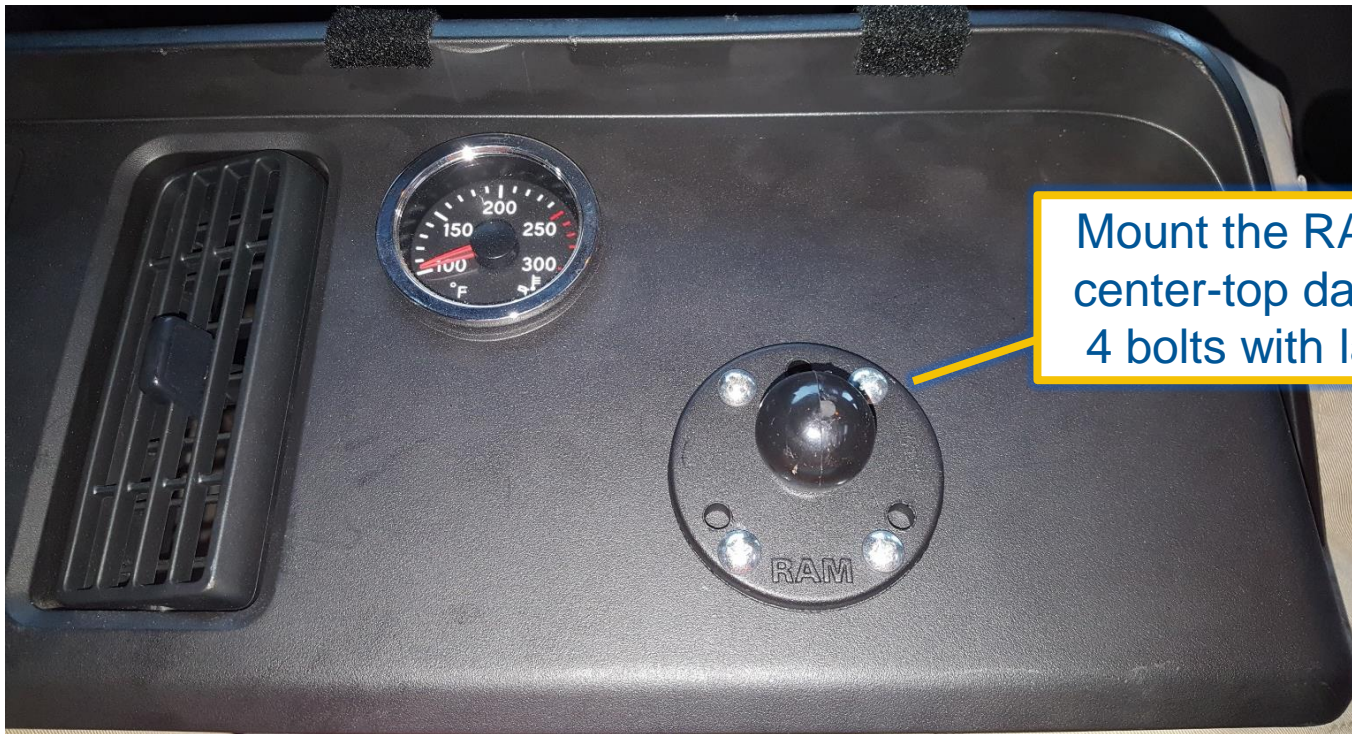
Display Mount Option 1



Mount the RAM base to the rectangular dash piece using 4 bolts with large washers.

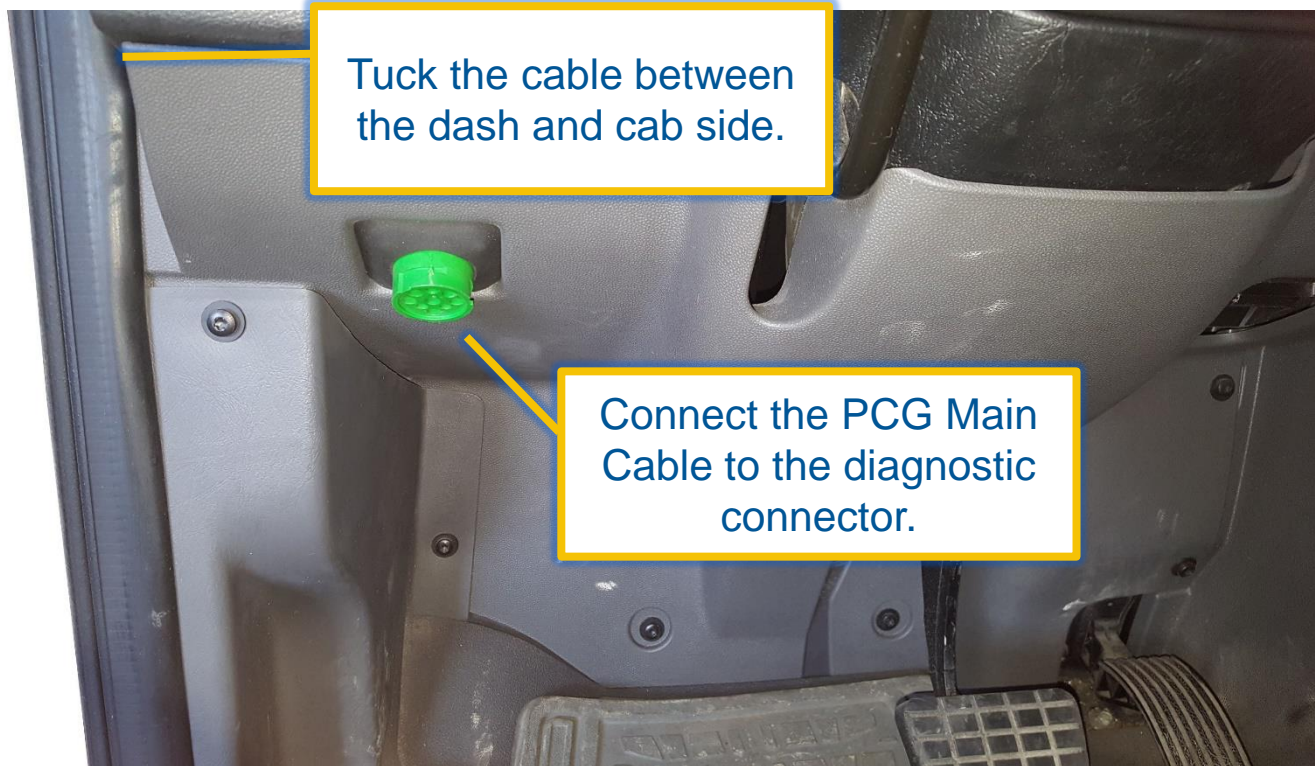
For In-Dash installs, drill a 1" hole in the plate and feed the display cable.

Display Mount Option 2

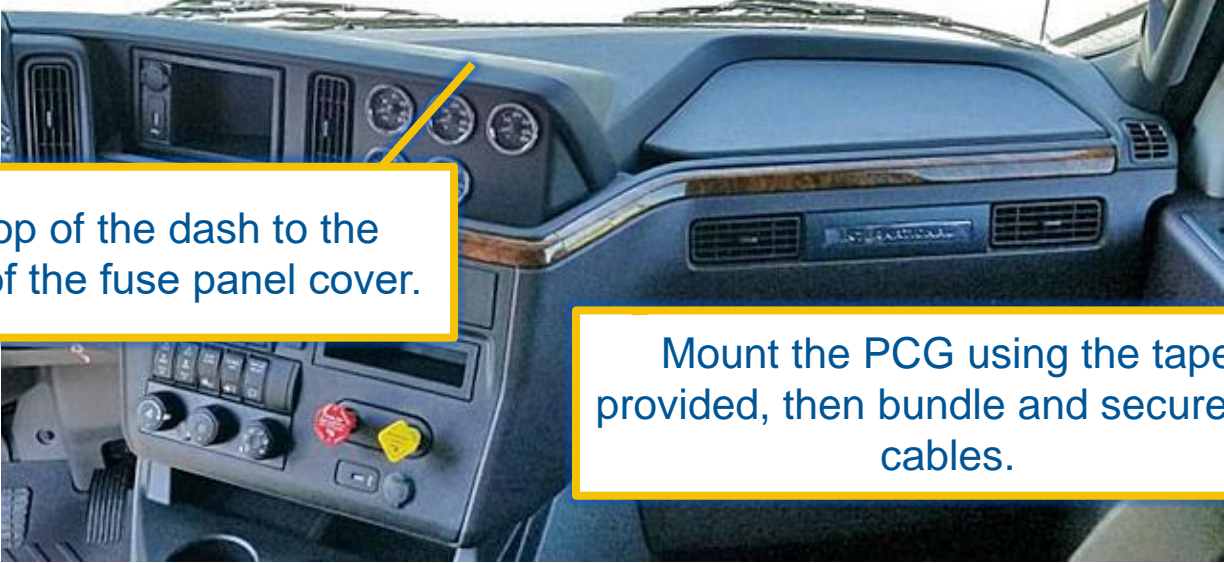


Mount the RAM base to the center-top dash piece using 4 bolts with large washers.

Diagnostic Connection – On-Dash



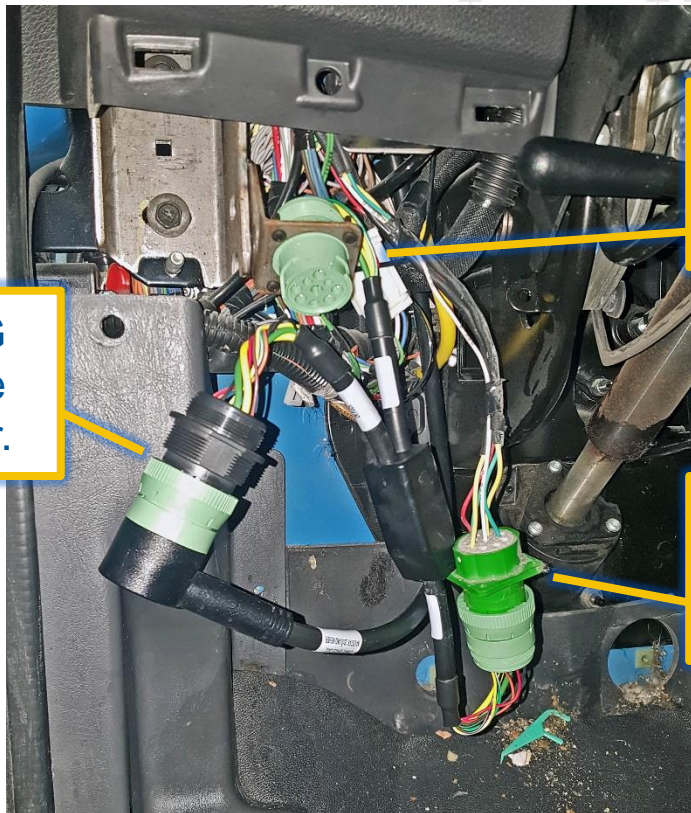
PCG Mount – On-Dash



Clean the top of the dash to the driver's side of the fuse panel cover.

Mount the PCG using the tape provided, then bundle and secure the cables.

Diagnostic Connection – In-Dash



Connect the PCG Main Cable to the black Y connector.

Mount the green male connector in place of the vehicle original.

Connect the vehicle connector to the green Y connector.

PCG Mount – In-Dash



Mount the PCG to the air-duct behind the passenger's side of center dash.