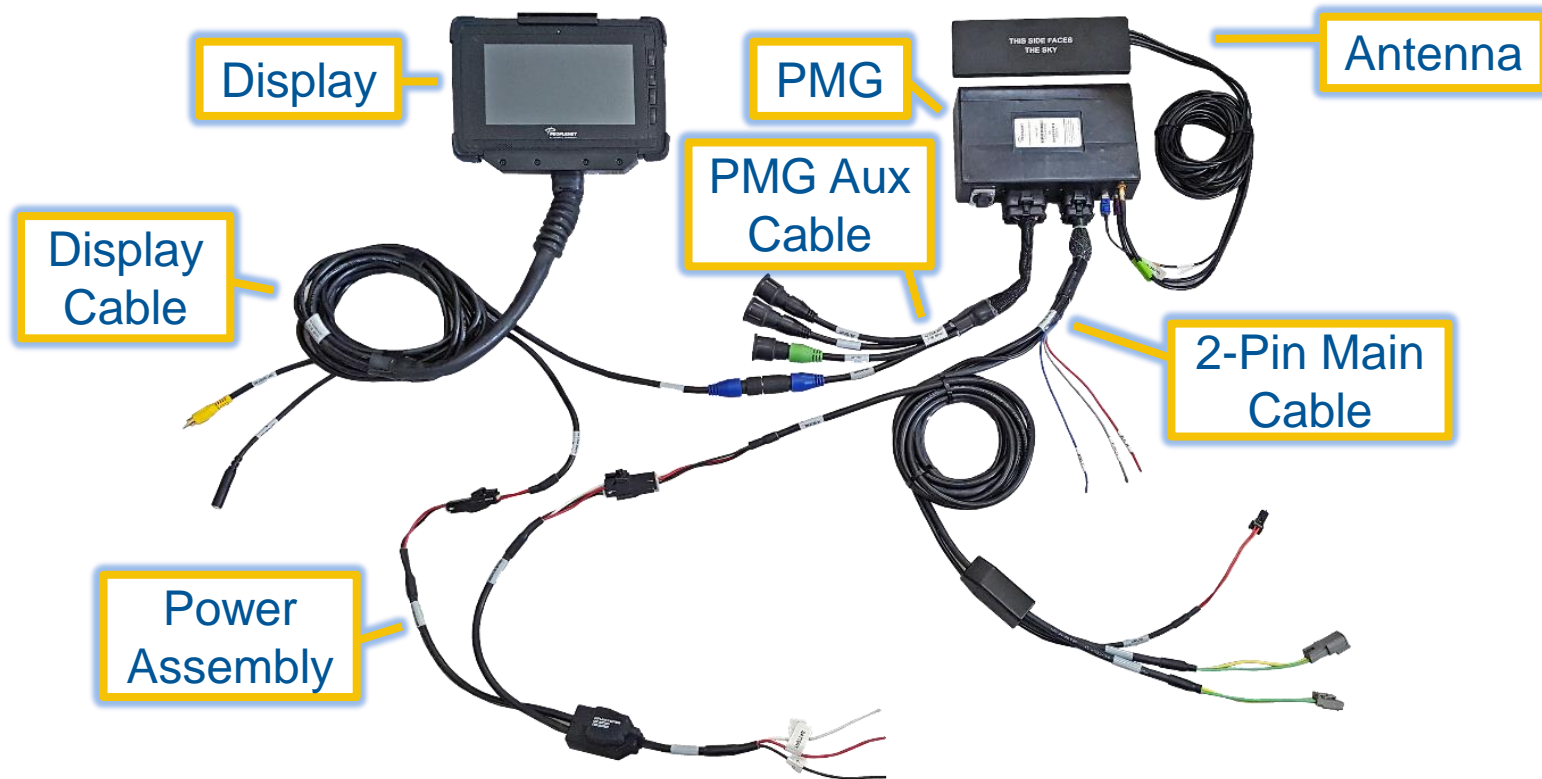


Volvo VN PeopleNet Mobile Gateway® Install Guide

Hardware Overview

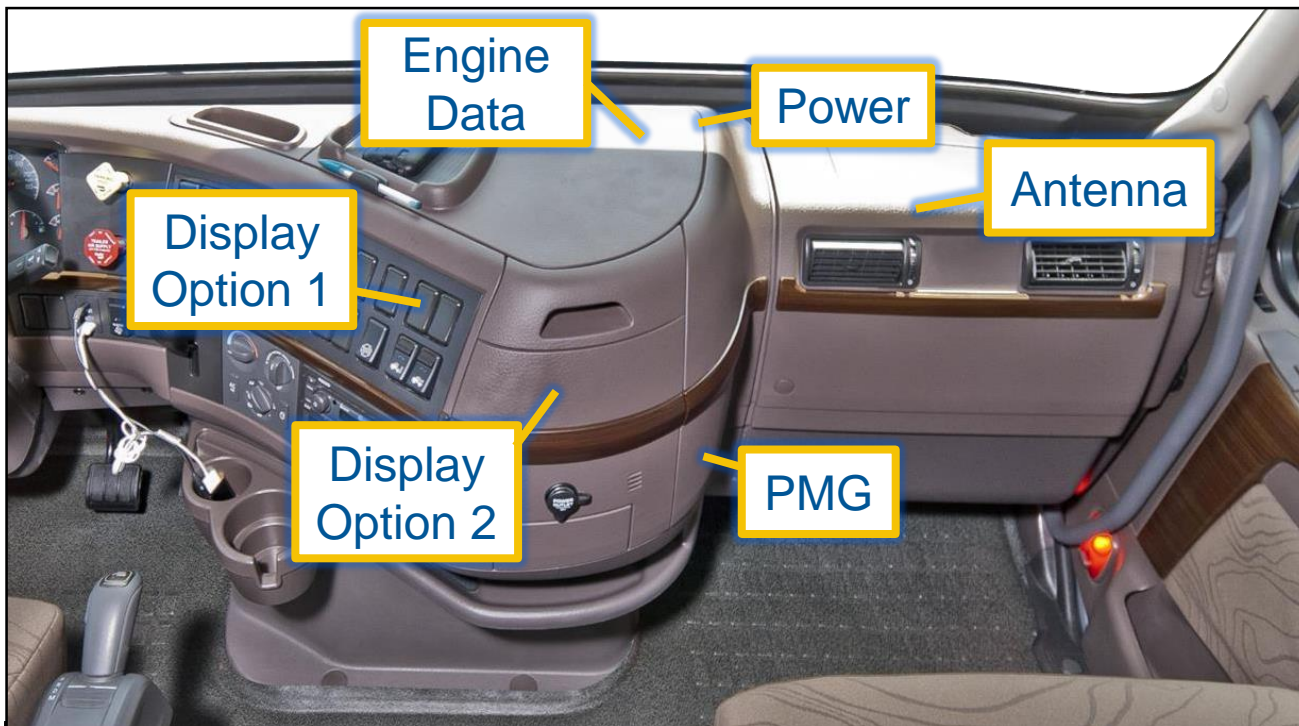


Non-PeopleNet Parts Needed

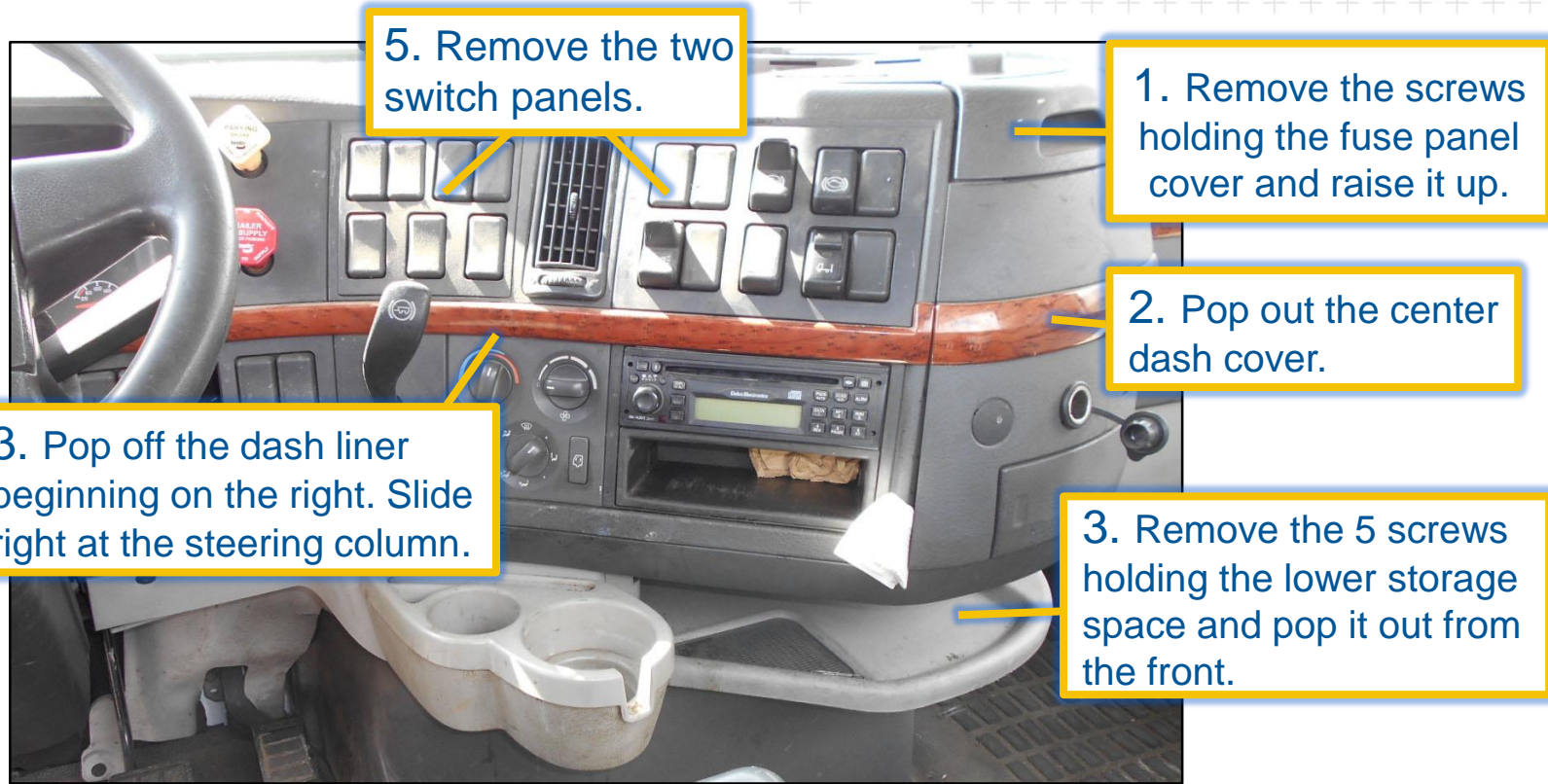


- Volvo provides secure spare connections for Power-Ignition-Ground, but these connections require a mating adapter.
- This adapter is available from a number of sources, with Peterbilt the cheapest at around \$10.
 - Peterbilt Part #16-09171
 - Two are required per install, one for constant power and one for ignition sense.

Installation Overview

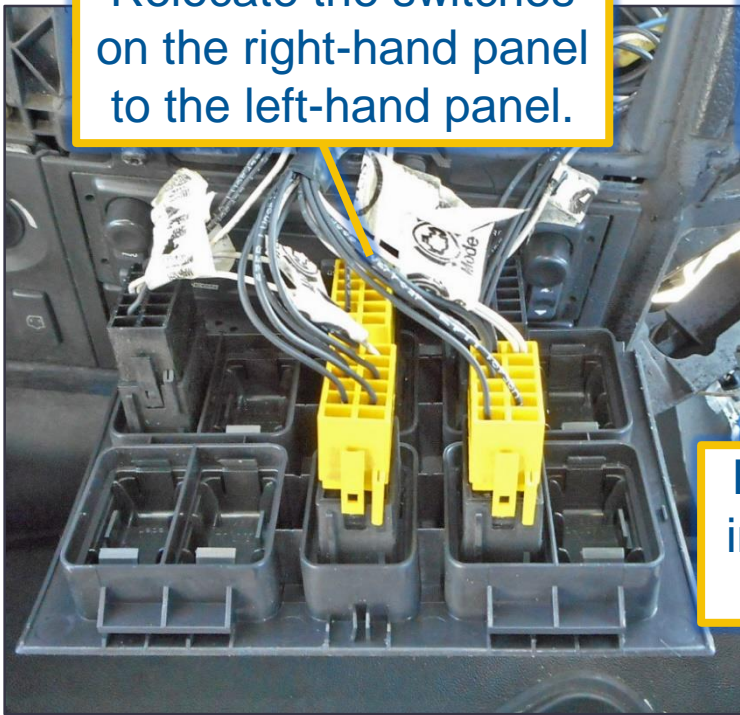


Dash Disassembly

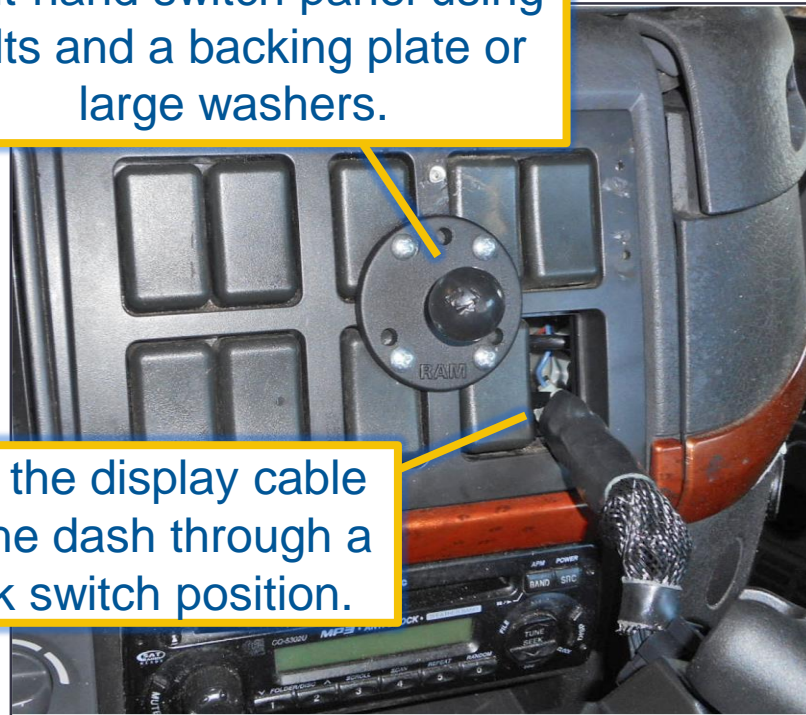


Display Option 1

Relocate the switches on the right-hand panel to the left-hand panel.



Mount the RAM base to the right-hand switch panel using bolts and a backing plate or large washers.



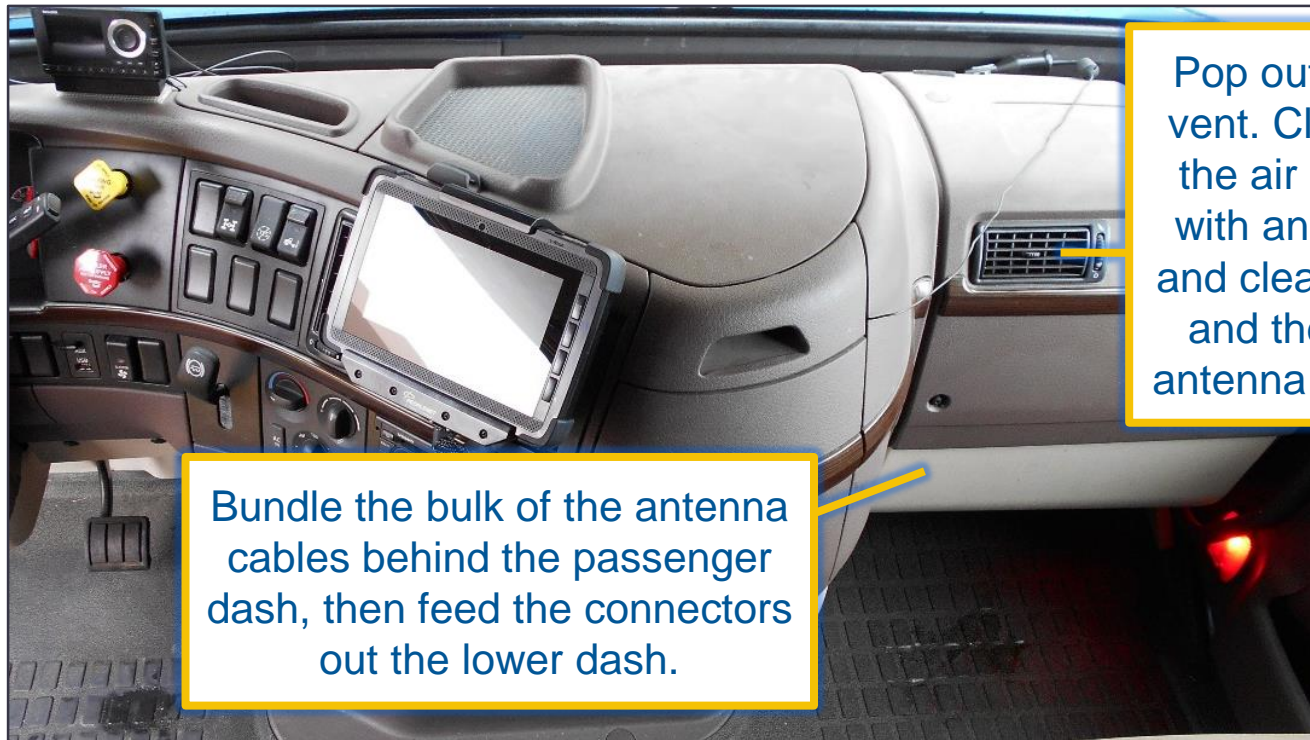
Feed the display cable into the dash through a blank switch position.

Display Option 2

For Automatic Transmission vehicles, mount the RAM to the center dash using bolts and a backing plate or large washers.



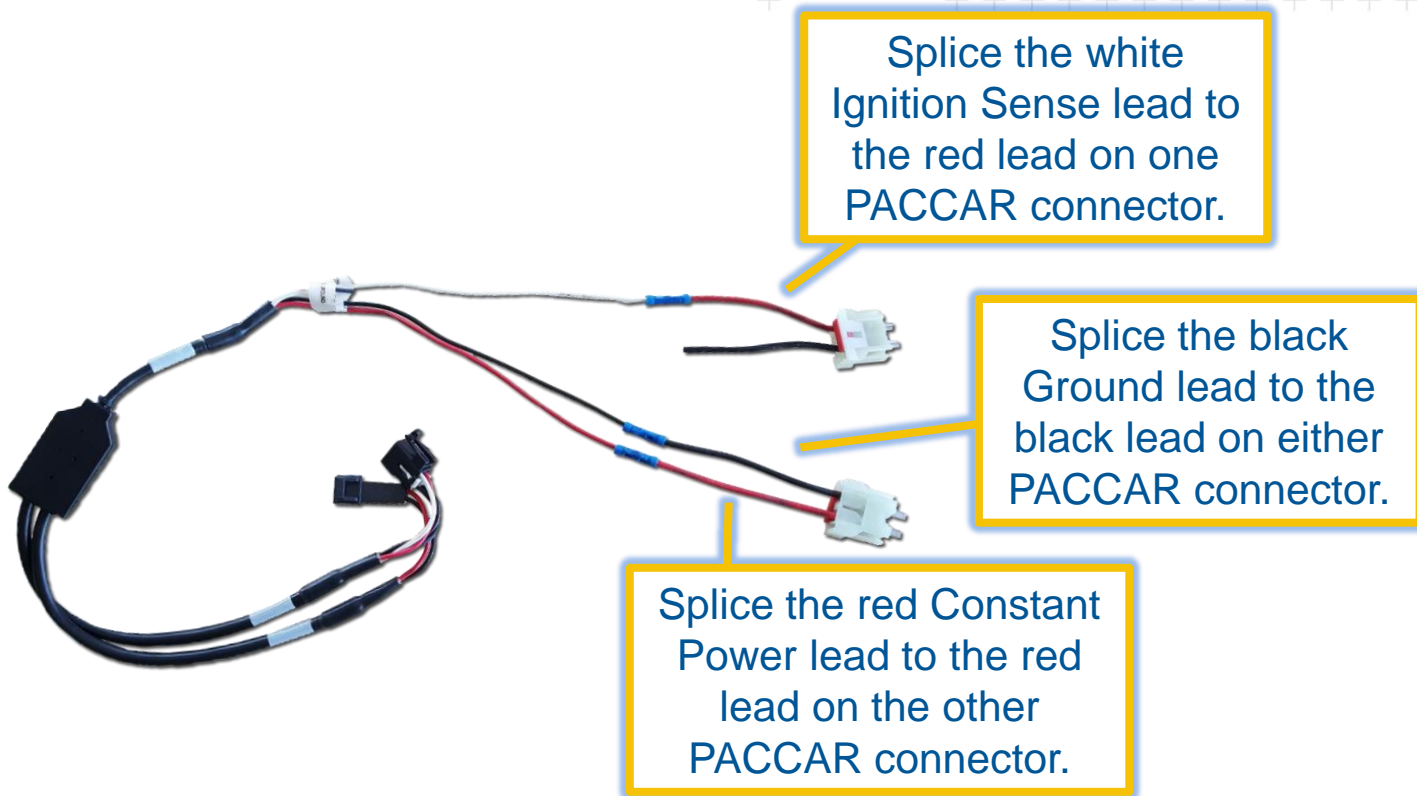
Antenna



Pop out the left-hand vent. Clean the top of the air duct behind it with an alcohol swab and clean paper towel, and then attach the antenna to the air duct.

Bundle the bulk of the antenna cables behind the passenger dash, then feed the connectors out the lower dash.

Power Assembly



Power Connections

[Click here to view a short video of this process.](#)

Insert the Ignition connector into one of the right-hand 3 spare positions.

Insert the Constant Power connector into one of the left-hand 3 spare positions.

Add fuses to the vehicle fuse positions corresponding to the spares. Check the fuse map on the panel cover to confirm the locations.

Battery Power
B1-1=F11
B1-2=F1
B1-3=F55

Ignition
B1-4=F31
B1-5=F61
B1-6=F66

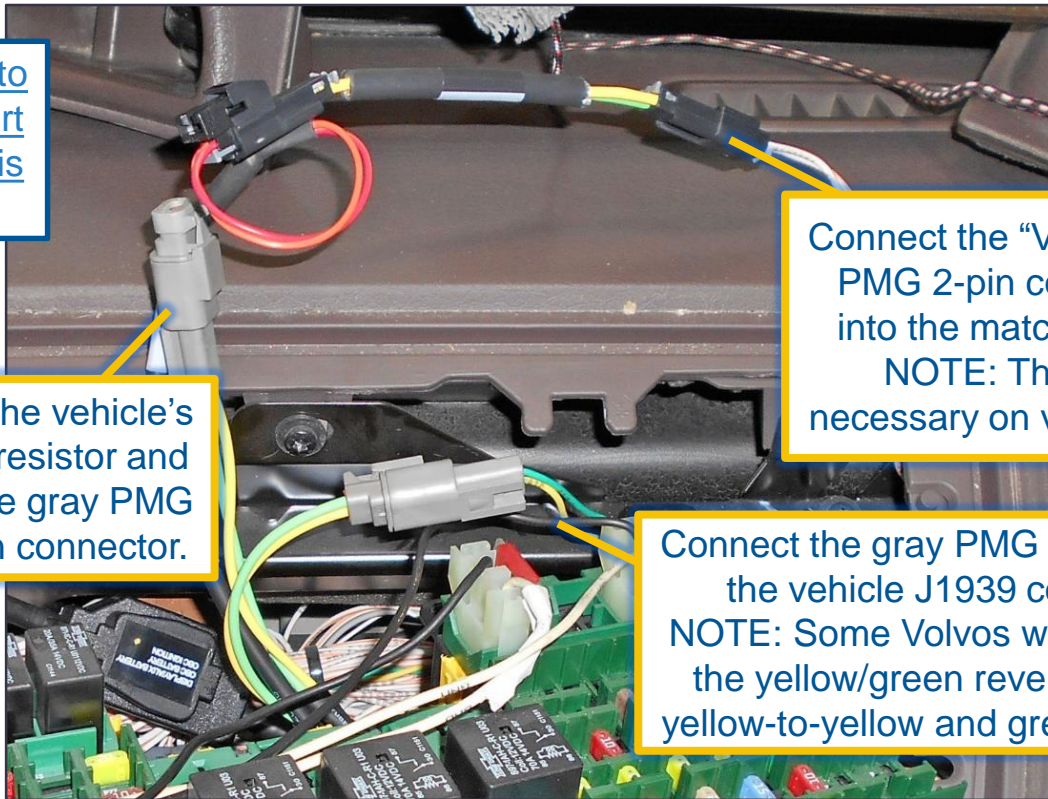
Engine Data

[Click here to view a short video of this process.](#)

Disconnect the vehicle's terminating resistor and insert it in the gray PMG female 2-pin connector.

Connect the "Volvo" pigtail to the black PMG 2-pin connector and plug that into the matching J1708 connector.
NOTE: This connection is not necessary on vehicles built after 2014.

Connect the gray PMG male 2-pin to the vehicle J1939 connector.
NOTE: Some Volvos were built with the yellow/green reversed. Verify yellow-to-yellow and green-to-green.

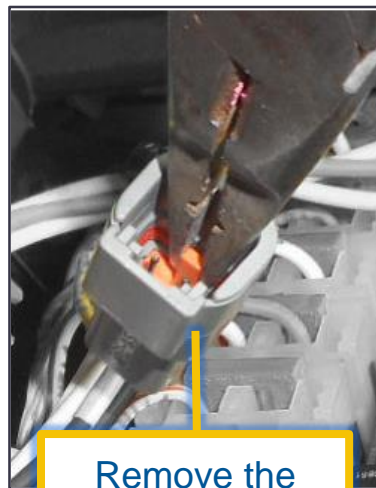


Correcting a Reversed J1939

FOLLOW THESE INSTRUCTIONS ONLY IF THE VOLVO CONNECTOR HAS REVERSED YELLOW/GREEN.



Note the reversed yellow/green.



Remove the orange insert from the vehicle connector.



Release the lock tabs and reverse the wires.



Reassemble and confirm the correction.

PMG Placement

Connect all cabling and tuck the PMG to the passenger's side of the doghouse, securing with one zip tie.

