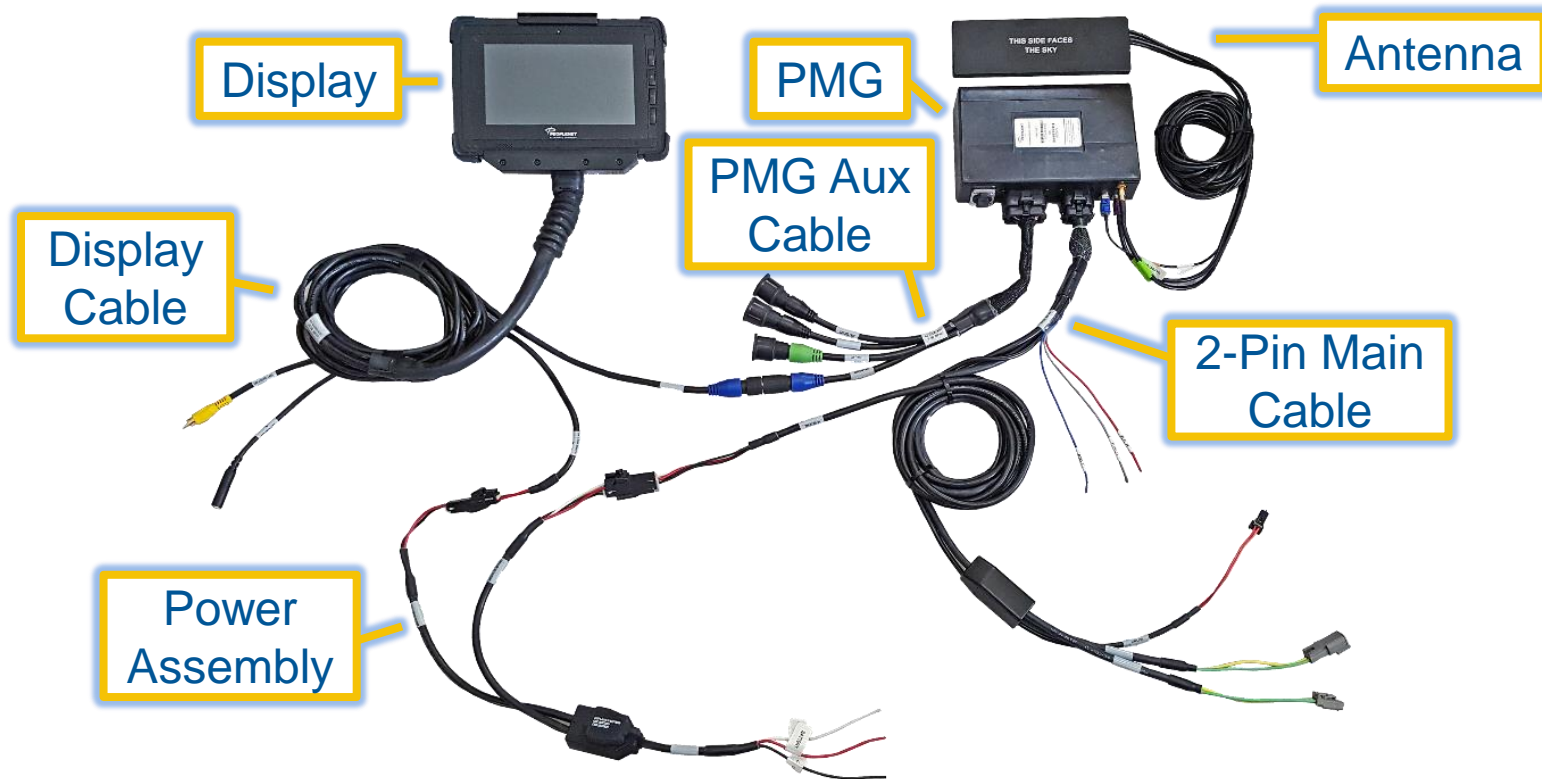


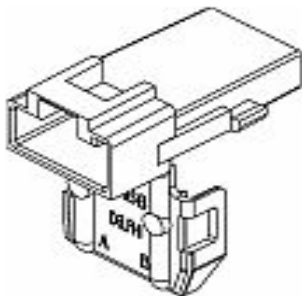
Volvo 2018+ VNL-VNR-VNX-VHD PeopleNet Mobile Gateway® Install Guide

Hardware Overview



Non-Trimble Parts Needed

Connector Housing
2 Per Vehicle
Aptiv 12034344

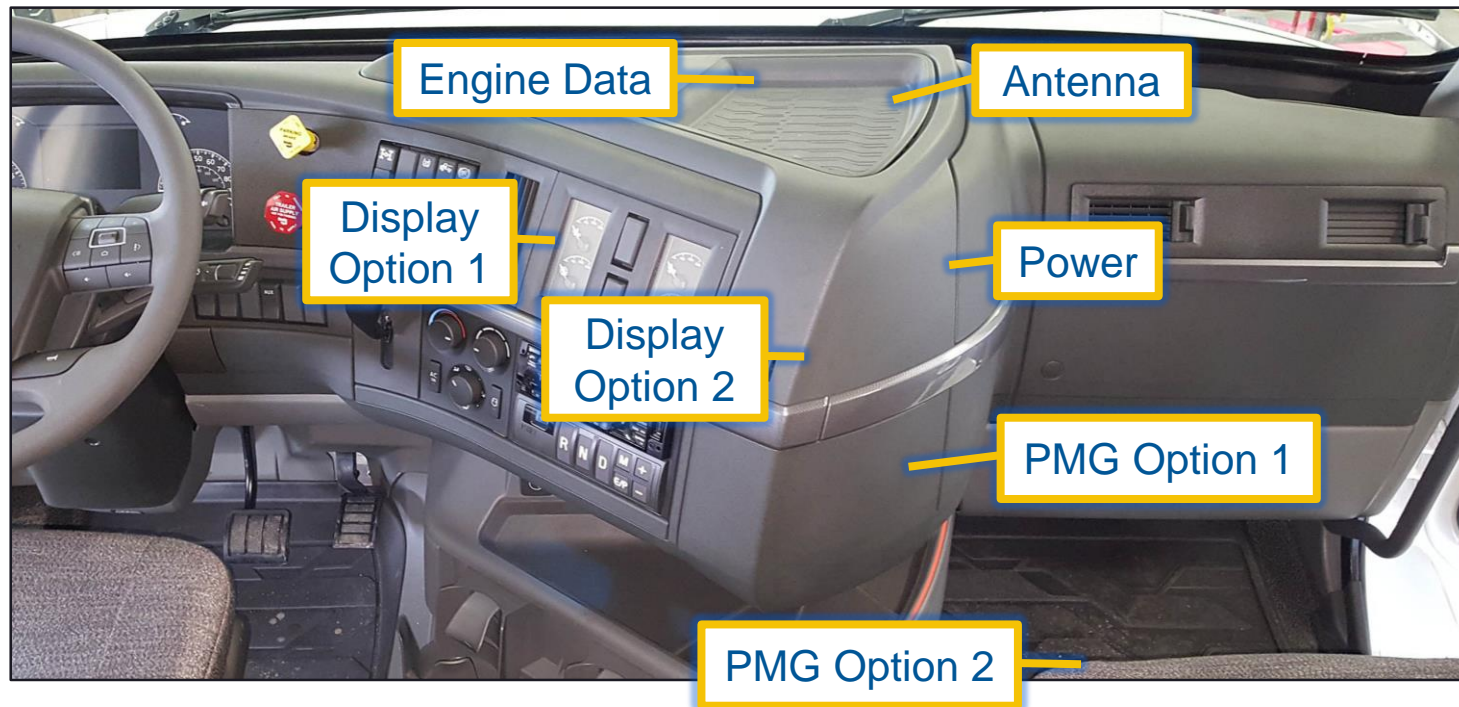


Power Pin
3 Per Vehicle
Aptiv 12020116



- Volvo provides spare Power/Ignition/Ground connections, but a non-destructive install requires special connectors.
- These can be purchased from a number of online sources: search on the part numbers for options.
- If no parts are available, you can follow the instructions below, but instead of direct connections you will cut the connectors off the vehicle and splice in the Power Assembly.

Installation Overview



Dash Disassembly

[Click here for a brief video of this process.](#)

1. Pop up the front edge of the fuse panel cover, then slide it forward and up.

2. Pop out the passenger's side silver piece starting near the center dash.

3. Pop out the driver's side silver piece starting near the center dash, then slide it to the right to release the tab near the steering column.

4. Remove the 2 screws holding the top dash panel and pop up the top portion to remove.

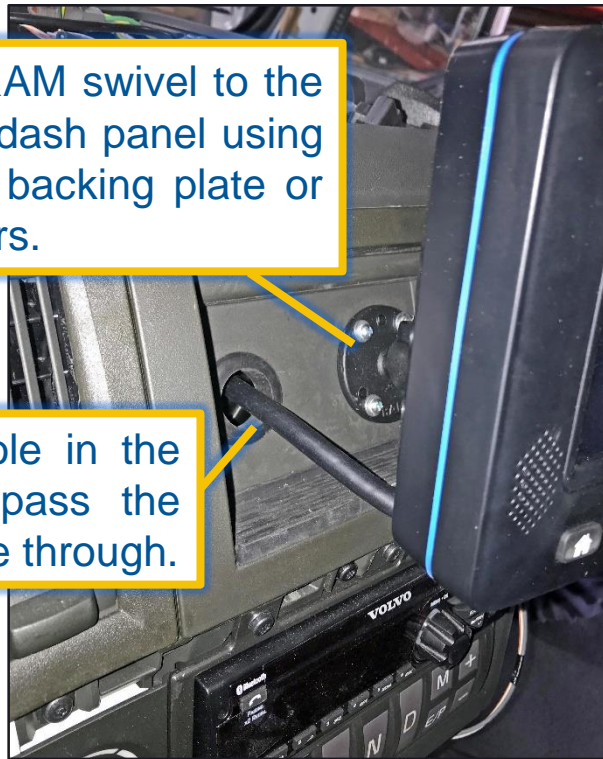
5. Remove the 2 screws holding the low-center panel and pop it straight back to release the two central tabs.

Display Mount Option 1

This mount is recommended for vehicles with no gauges on the right-center dash panel.

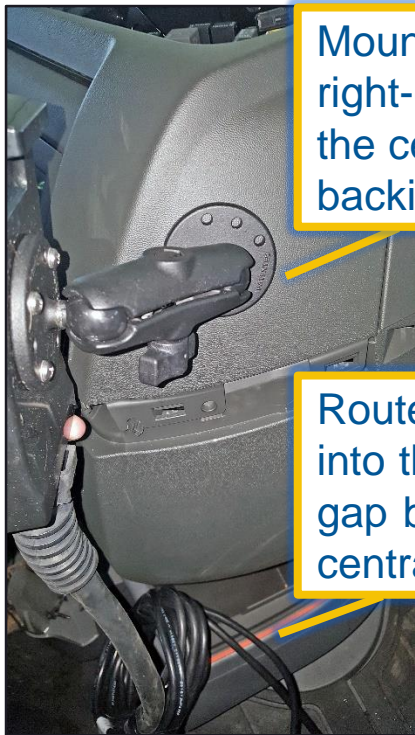
Mount the RAM swivel to the right-center dash panel using bolts and a backing plate or large washers.

Cut a 1" hole in the panel and pass the display cable through.



Display Mount Option 2

This mount is recommended for vehicles with no space available on the right-center dash panel.



Mount the RAM swivel to the right-center dash panel above the center line using bolts and a backing-plate or large washers.

Route the display cable into the dash through the gap below/forward of the central storage space.



Engine Data

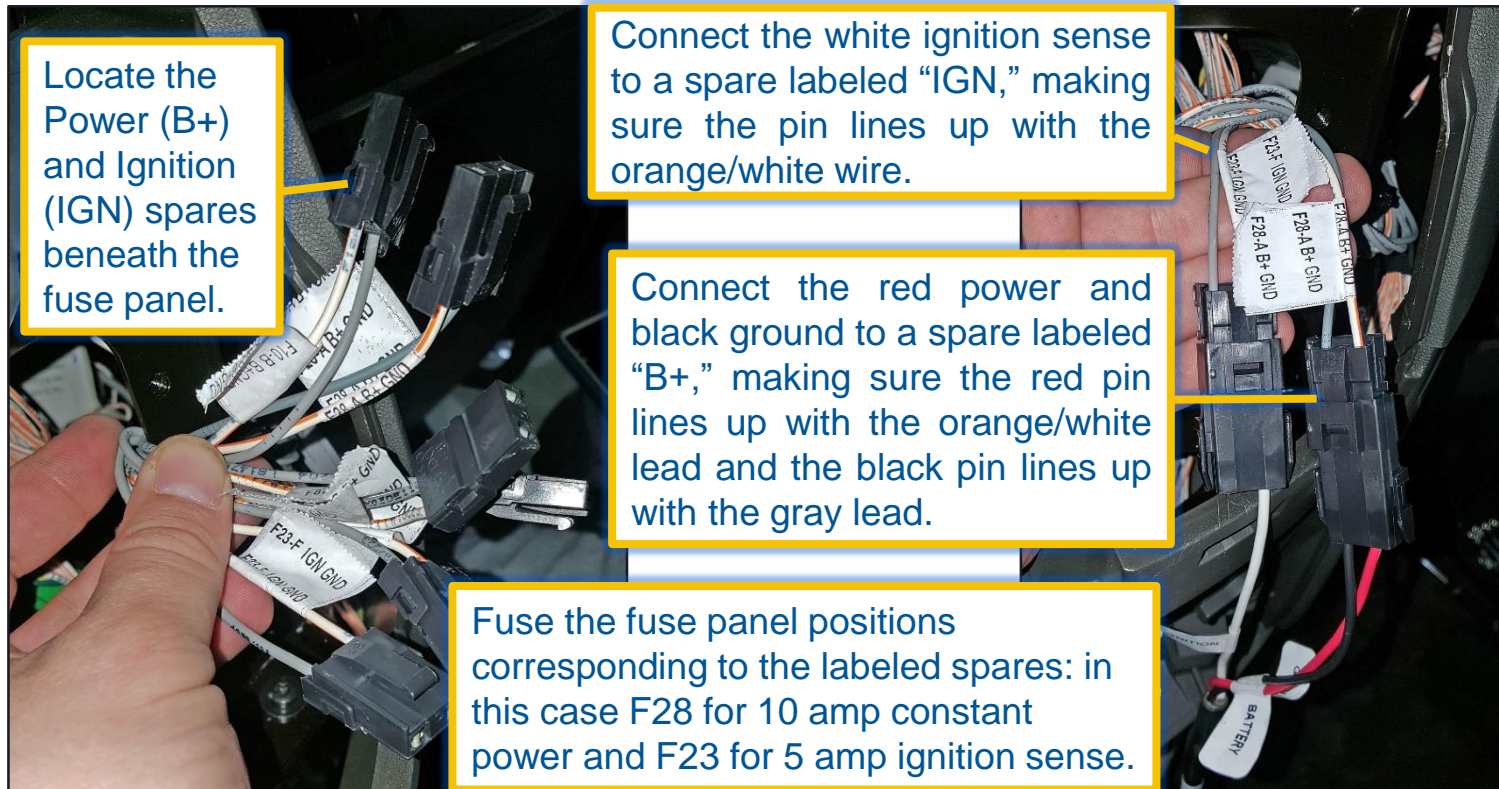
In the forward area of the fuse panel, locate the gray connector labeled “DL1J1939”. Do not use “DL3” or “DL5”.

Disconnect the terminating resistor from the vehicle’s gray J1939 data line and connect the PMG Main Cable male in its place.



Connect the terminating resistor to the PMG main cable female; then secure the cabling.

Power Connections



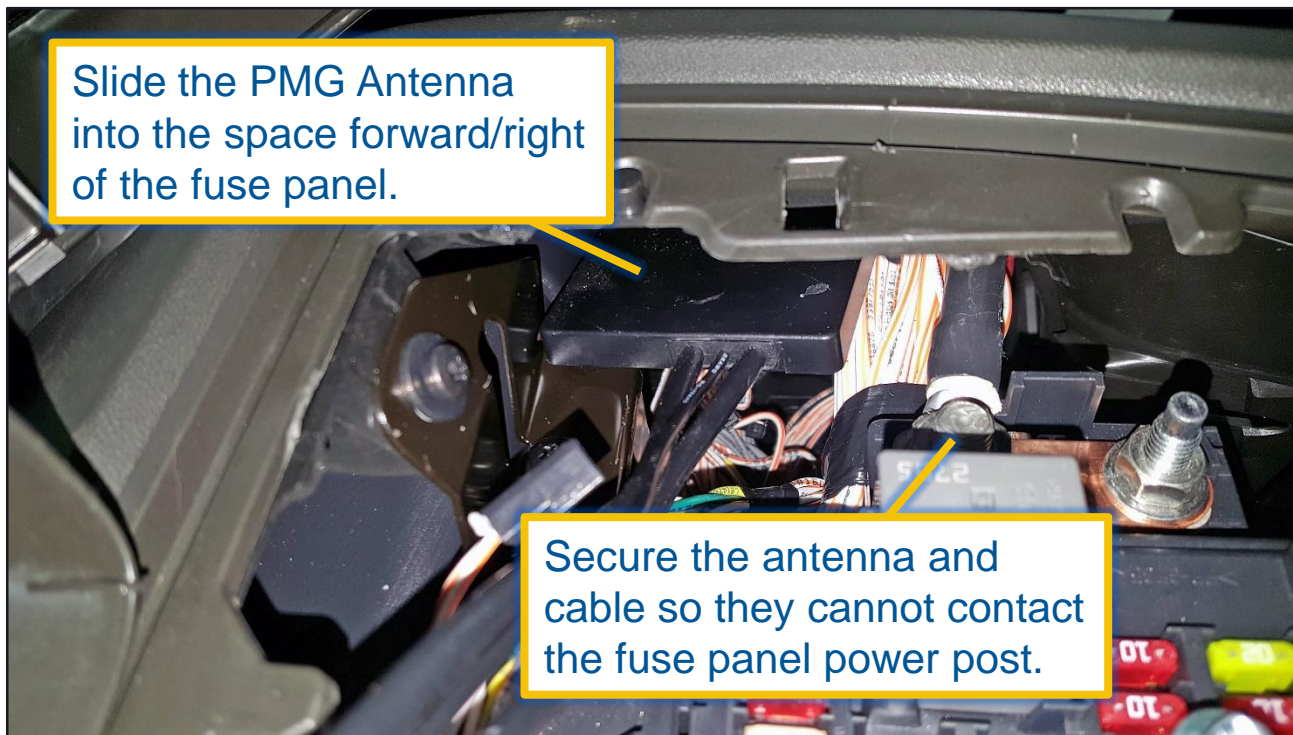
Locate the Power (B+) and Ignition (IGN) spares beneath the fuse panel.

Connect the white ignition sense to a spare labeled "IGN," making sure the pin lines up with the orange/white wire.

Connect the red power and black ground to a spare labeled "B+," making sure the red pin lines up with the orange/white lead and the black pin lines up with the gray lead.

Fuse the fuse panel positions corresponding to the labeled spares: in this case F28 for 10 amp constant power and F23 for 5 amp ignition sense.

Antenna



PMG Mount

Mount the PMG to the passenger's side of the doghouse cover using 4 screws.

If a fully hidden install is preferred, mount the PMG inside the box under the passenger's seat and route the cables forward under the carpet near the kick plate.

