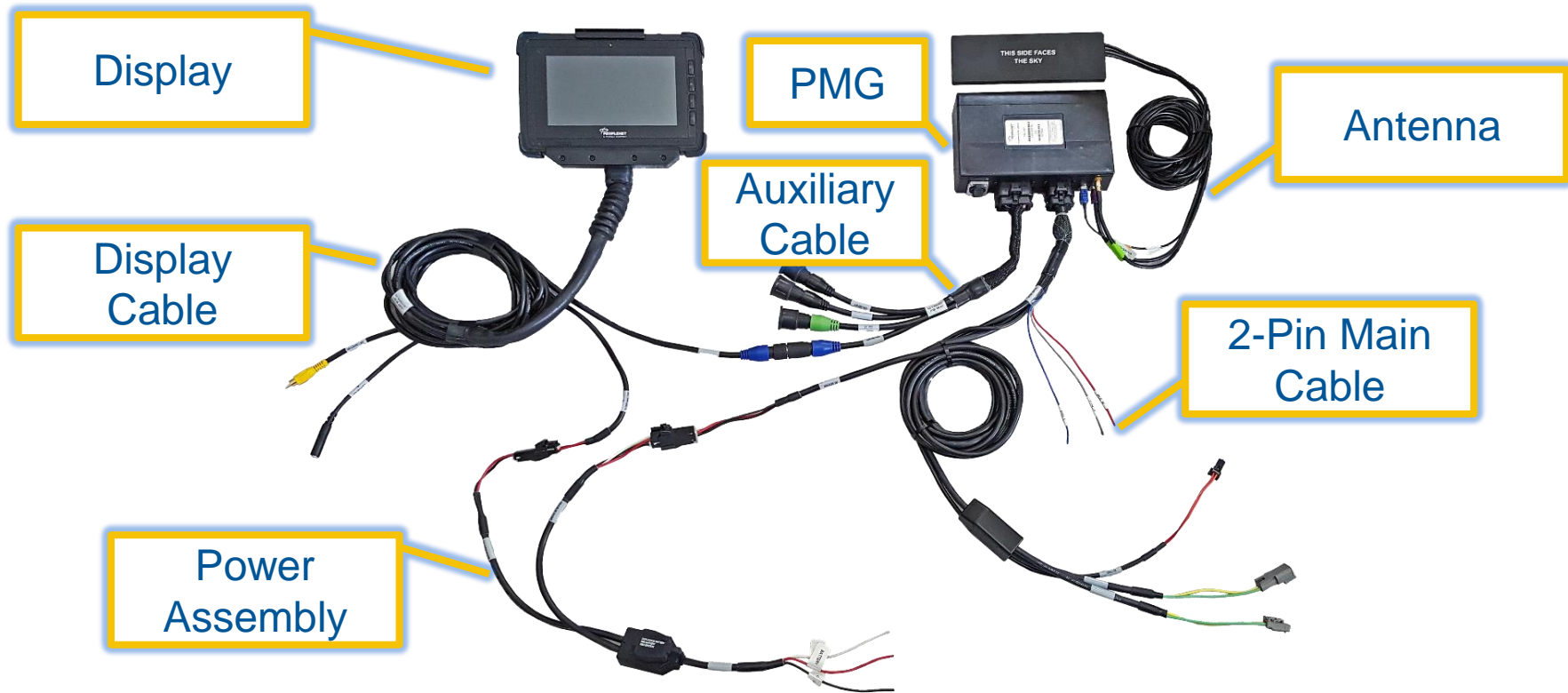


Peterbilt 337, 348, and 382 Install Guide PeopleNet Mobile Gateway[®] (PMG)

Hardware Overview



Non-PeopleNet Parts Needed



- Peterbilt provides secure spare connections for Power-Ignition-Ground, but these connections require a mating adapter.
- This adapter is available from a number of sources, with Peterbilt the cheapest at around \$10.
 - Peterbilt Part #16-09171
 - Two are required per install, one for constant power and one for ignition sense.
- If no adapter is available, you can connect with a standard blade but be sure it is well secured against vibration or accidental removal.

Install Overview



Power
Connections

Engine Data

Antenna

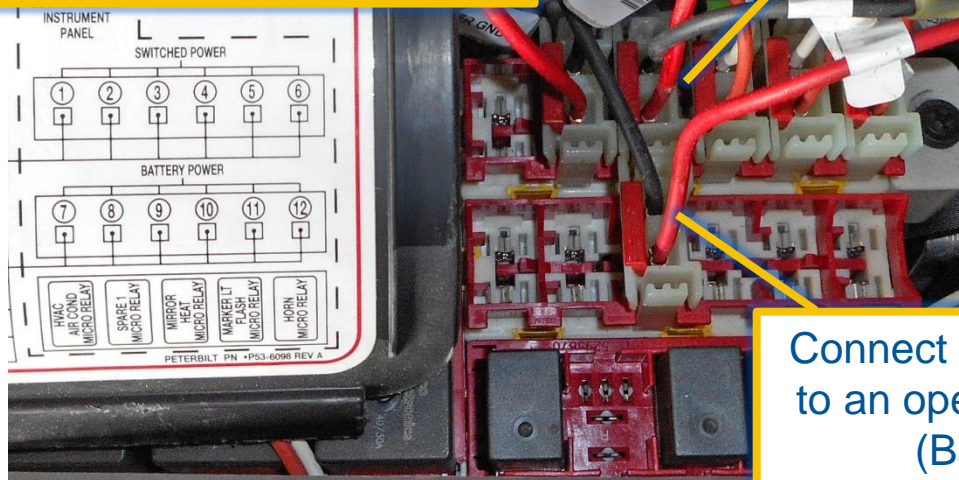
Display

PMG

Power Connections

Splice the Constant Power (red) and Ground (black) to one locking power plug and the Ignition Sense (white) to the red of the other.

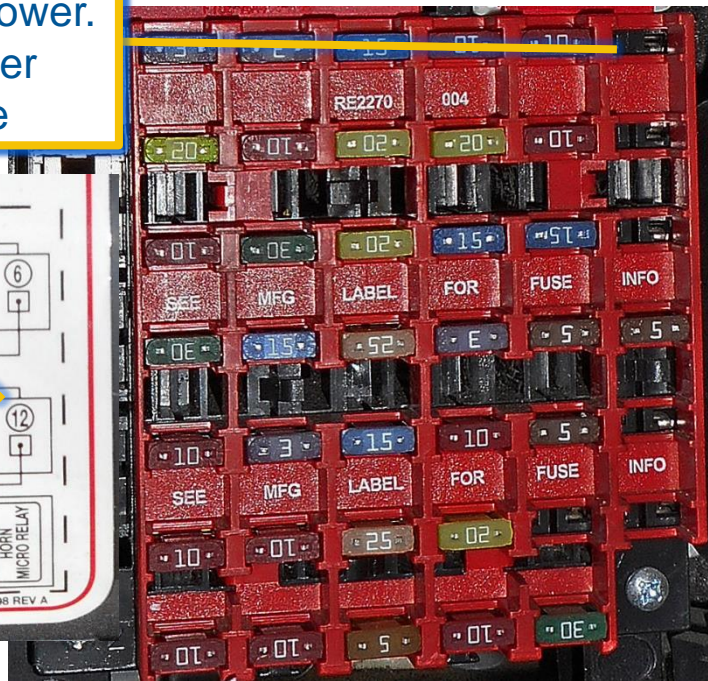
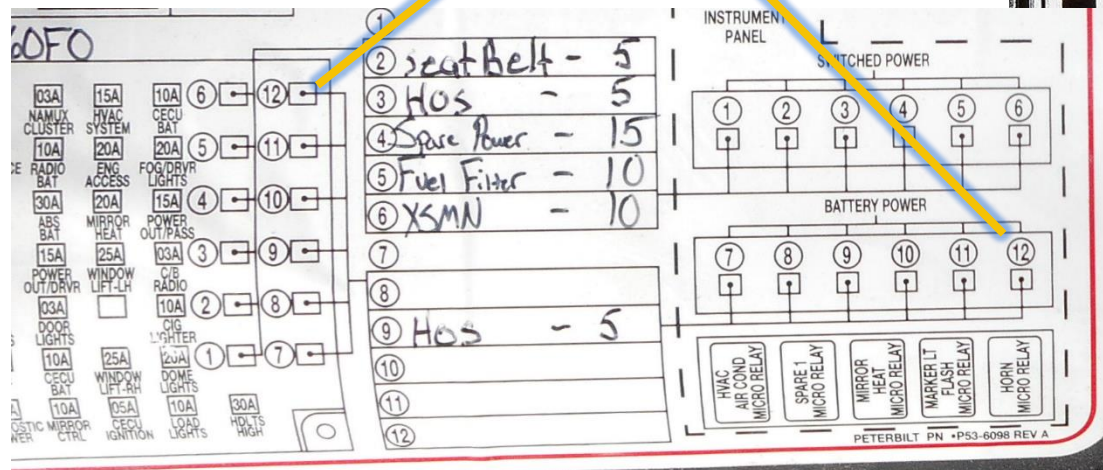
Connect the Ignition Sense plug to an open spare port on the forward (Switched Power) row.



Connect the Constant Power plug to an open spare port on the rear (Battery Power) row.

Fusing

Fuse the positions corresponding to the Constant and Ignition power.
10 amps for Constant Power
5 amps for Ignition Sense

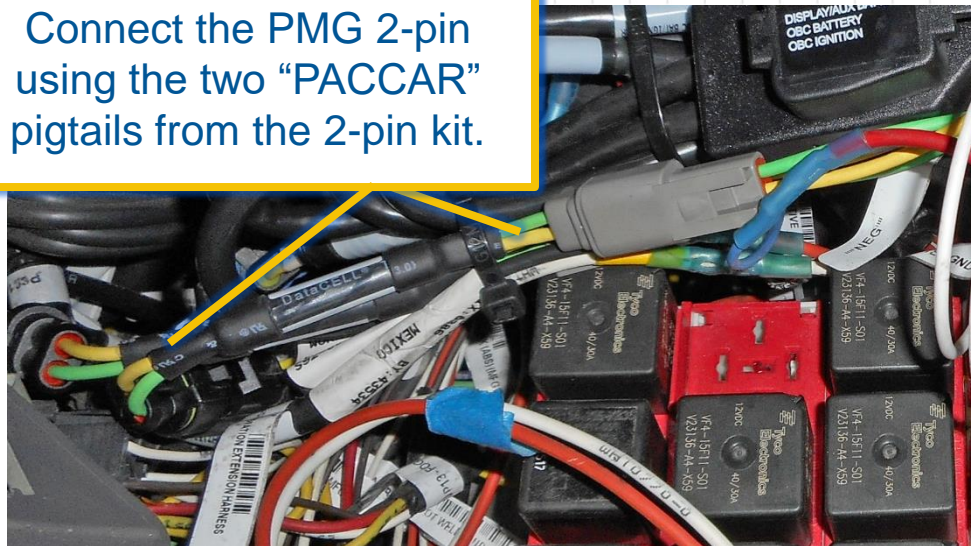


Engine Data

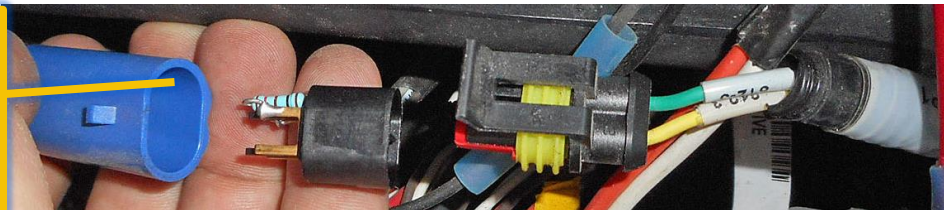
Locate the J1939 backbone black/blue connector with yellow/green wires behind the ignition switch.



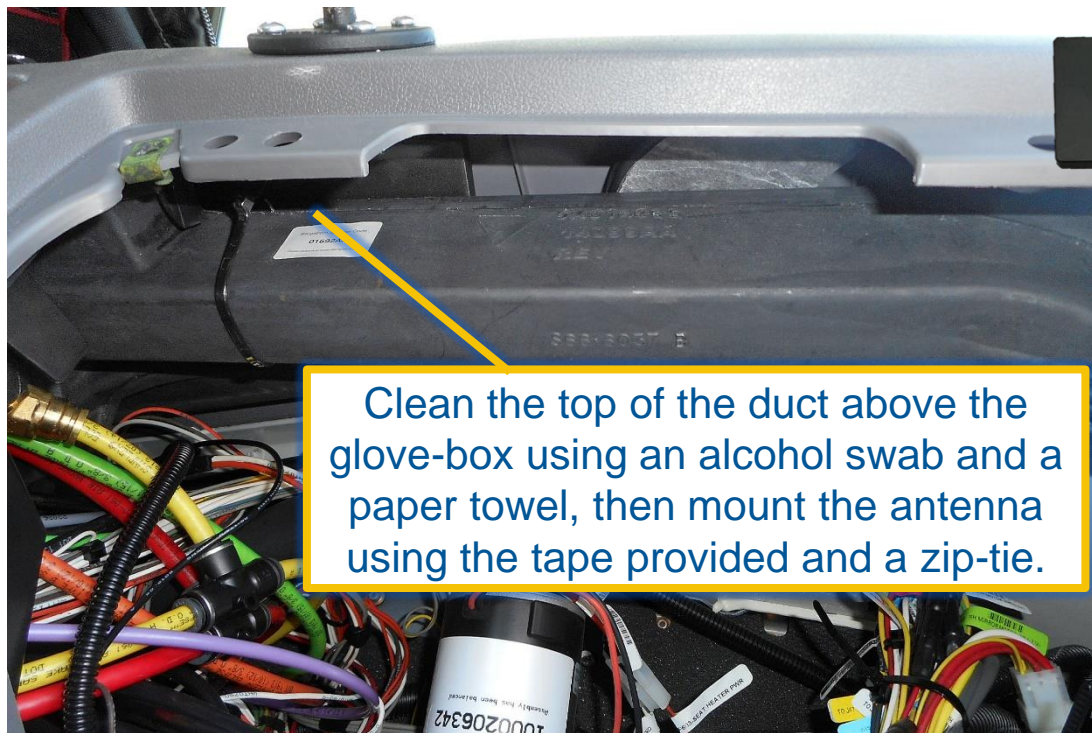
Connect the PMG 2-pin using the two “PACCAR” pigtails from the 2-pin kit.



If the vehicle connector comes apart showing 4 pins and a resistor, remove that piece from the black 2-pin and reinsert it in the blue female connector.



Antenna



Clean the top of the duct above the glove-box using an alcohol swab and a paper towel, then mount the antenna using the tape provided and a zip-tie.



Display Mount



Attach the RAM mount to the dash above the glove-box using bolts and large washers or a backing plate.



Notch the panel below the glove-box and route the cable into the dash.



If you would like the display closer to the driver, substitute the 11" arm available through RAM.

<https://www.rammount.com/part/RAM-101U-D>

PMG Mount

Bundle any extra cabling in the space below the glove-box.

Mount the PMG to the side-wall below the glove-box using strong 2-sided tape or screws.

