

# Mack 2018+

## PeopleNet Connected Gateway™ Install

# Important Update

- Mack announced on March 20, 2019 that they could not endorse using the diagnostic connector for any third party modules on vehicle model years 2018 and up. This would include PeopleNet/Trimble devices.
- This was not a response to known issues, but the install recommendations have changed to reflect Mack's position. That involves connecting inside the dash using the 2-pin Main Cable.
- Mack is working on an alternative connection, the RP1226, which should be available in late 2019.

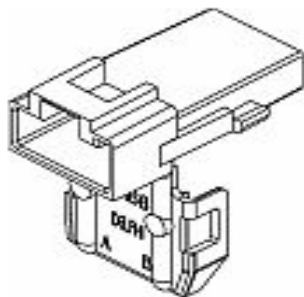
# Install Steps



- 1) Connect and mount the display.
- 2) Connect and mount the PCG.
- 3) Connect the display blue barrel and 2-pin power to the PCG Main Cable. Non-Trimble displays will not require the blue barrel.
- 4) Connect the PCG Main Cable to the vehicle power and 2-pin engine data.

# Non-Trimble Parts Needed

Connector Housing  
2 Per Vehicle  
Delphi 12034344



Power Pin  
3 Per Vehicle  
Delphi 12020116



- Mack provides spare Power/Ignition/Ground connections, but a non-destructive install requires special connectors.
- These can be purchased from a number of online sources: search on the part numbers for options.
- If no parts are available, you can follow the instructions below, but instead of direct connections you will cut the connectors off the vehicle and splice in the Power Assembly.

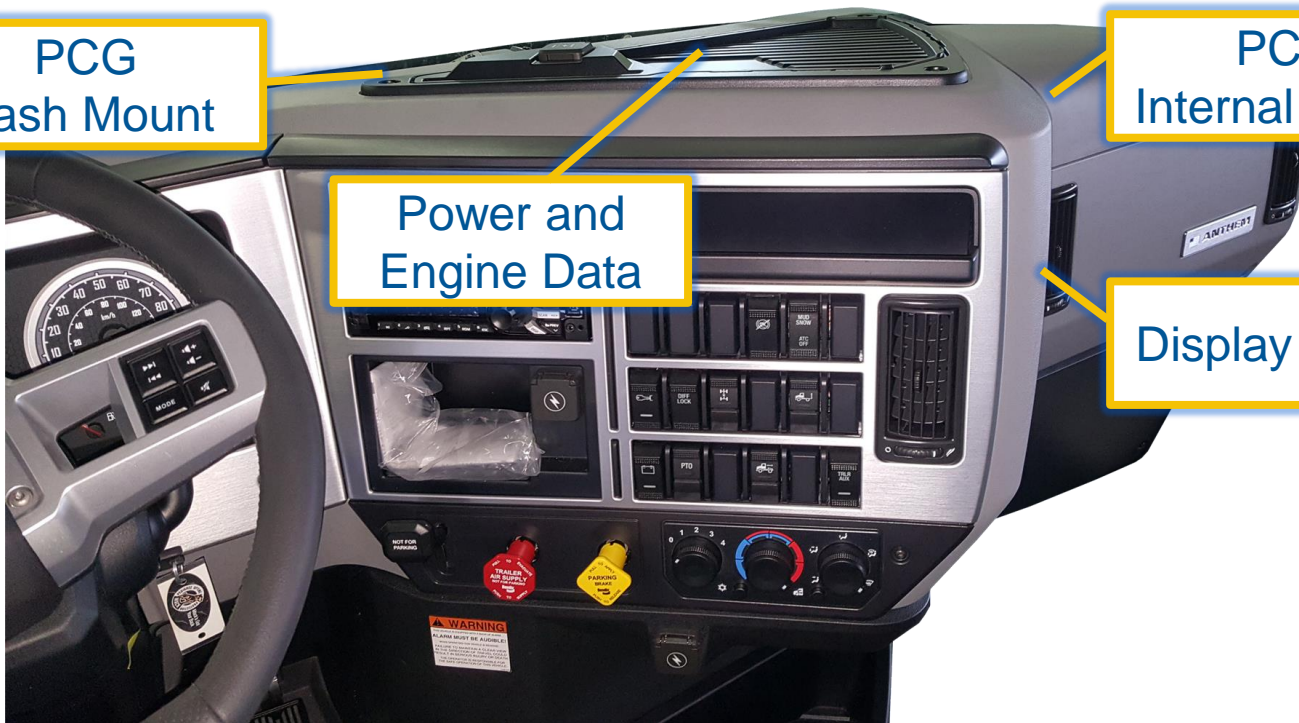
# Install Overview

PCG  
Dash Mount

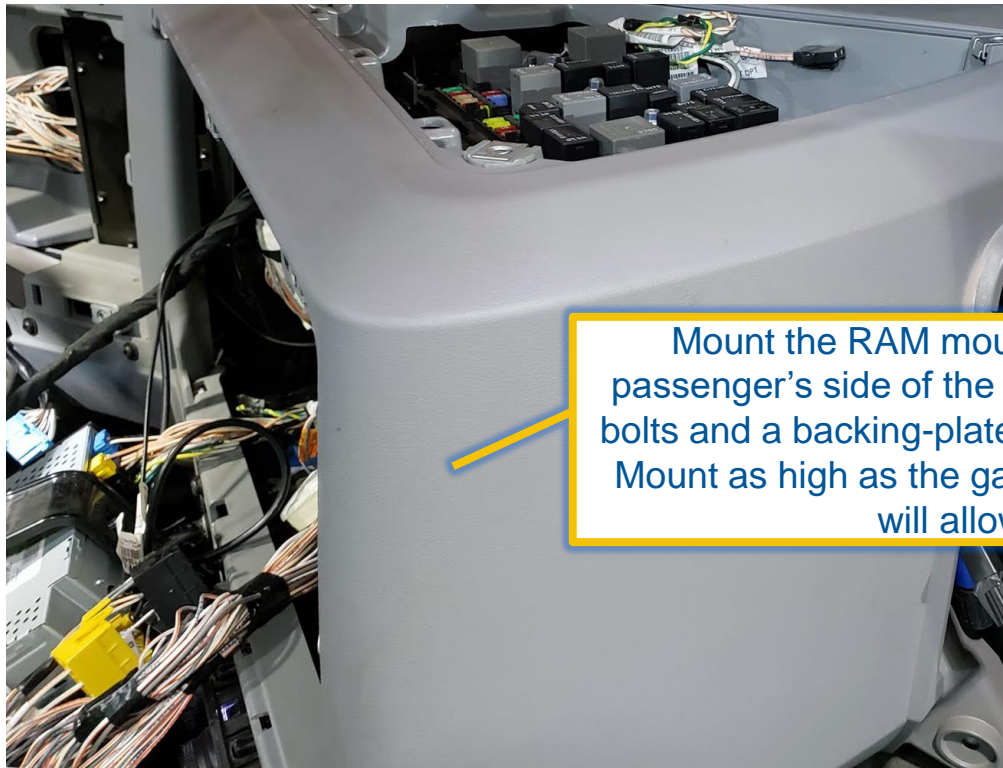
PCG  
Internal Mount

Power and  
Engine Data

Display Mount



# Display Mount



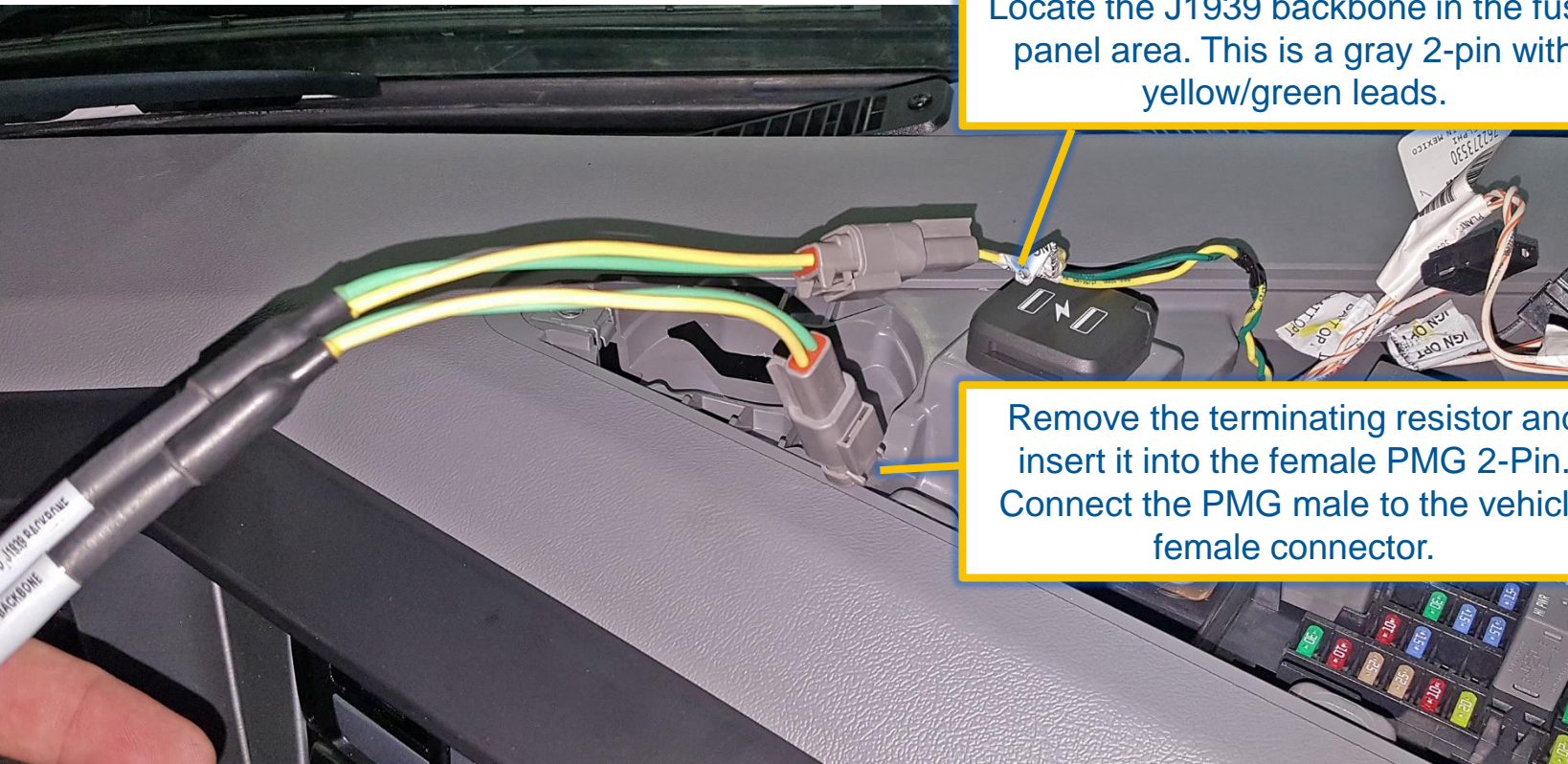
Mount the RAM mount base to the passenger's side of the center dash using bolts and a backing-plate or large washers. Mount as high as the gauge arrangement will allow.



# Engine Data

Locate the J1939 backbone in the fuse panel area. This is a gray 2-pin with yellow/green leads.

Remove the terminating resistor and insert it into the female PMG 2-Pin. Connect the PMG male to the vehicle female connector.



# Power Connections

Locate the “IGN OPT” and “BATT OPT” spares in the front of the fuse panel area.

Pin the Ignition Sense (white) to pin A of an Aptiv connector, matching the White/Orange on the vehicle side.

Pin the Constant Power (red) and Ground (black) to an Aptiv connector with the power in pin A, matching the White/Orange on the vehicle side.

As noted above, if no pins are available cut the connector ends from the vehicle and splice directly to the leads.

Add a 10 amp fuse to position F28 for the BATT power.  
Add a 5 amp fuse to position F32 for Ignition Sense.



# PCG Mount – In-Dash

