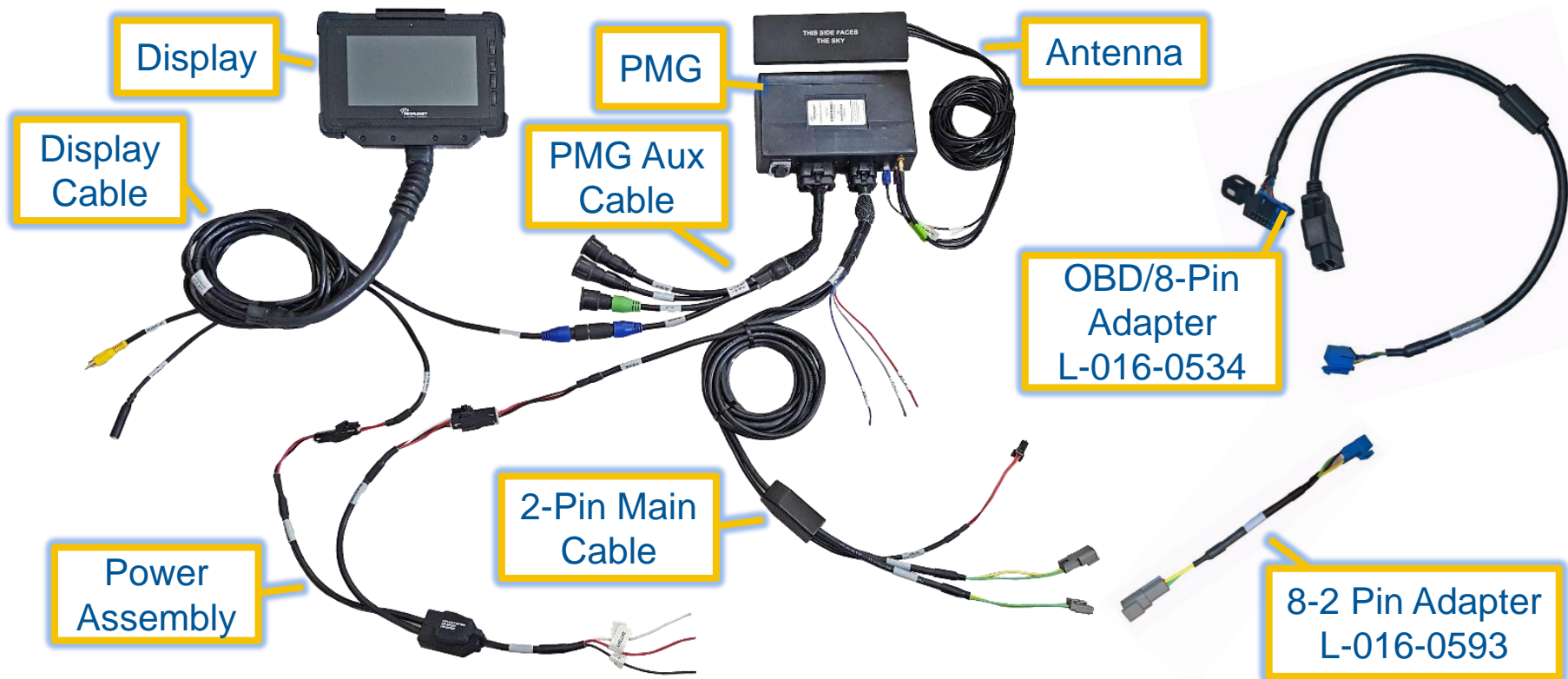


Hino Truck Install PeopleNet Mobile Gateway[®] (PMG)

Recommended Parts

- Display and Display Kit
 - This will vary by customer, but all displays will connect in the same way.
- PMG
- PMG 2-Pin Install Kit M-010-0618
- 2-Pin Hino Cable L-016-0593
- OBD-to-8 Pin adapter L-016-0534

PeopleNet Parts

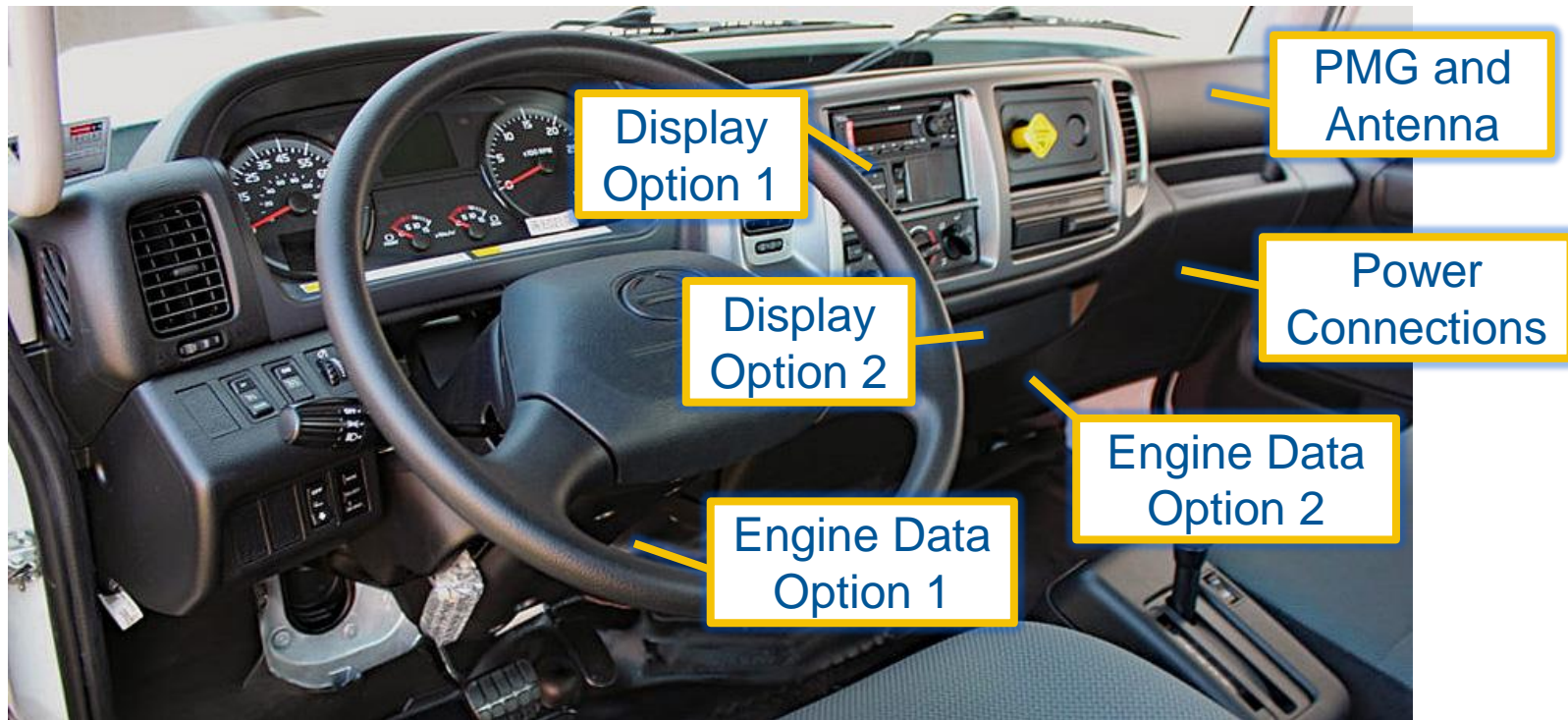


Non-PeopleNet Parts Needed



- Hino provides no spare power connections, so the install will require two Mini-ATC Add-a-Circuit connectors.
- These are available from a number of sources. Google “Mini-ATC Add-a-Circuit” for options.

Install Overview



Engine Data 2011-12 and 2017+

1. Remove the existing OBD connector and plug it to the adapter.

2. Mount the adapter male OBD in place of the original.

3. Connect the OBD adaptor to the blue 8-pin. Bundle and secure the connectors and route to the main cable.

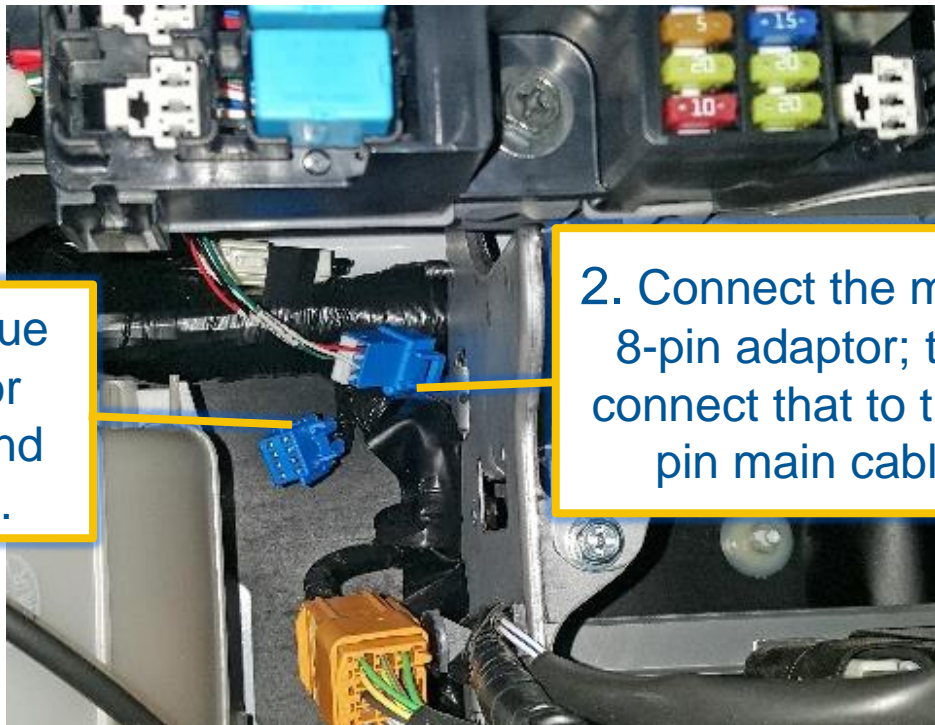


Engine Data Alternate 2013-2016

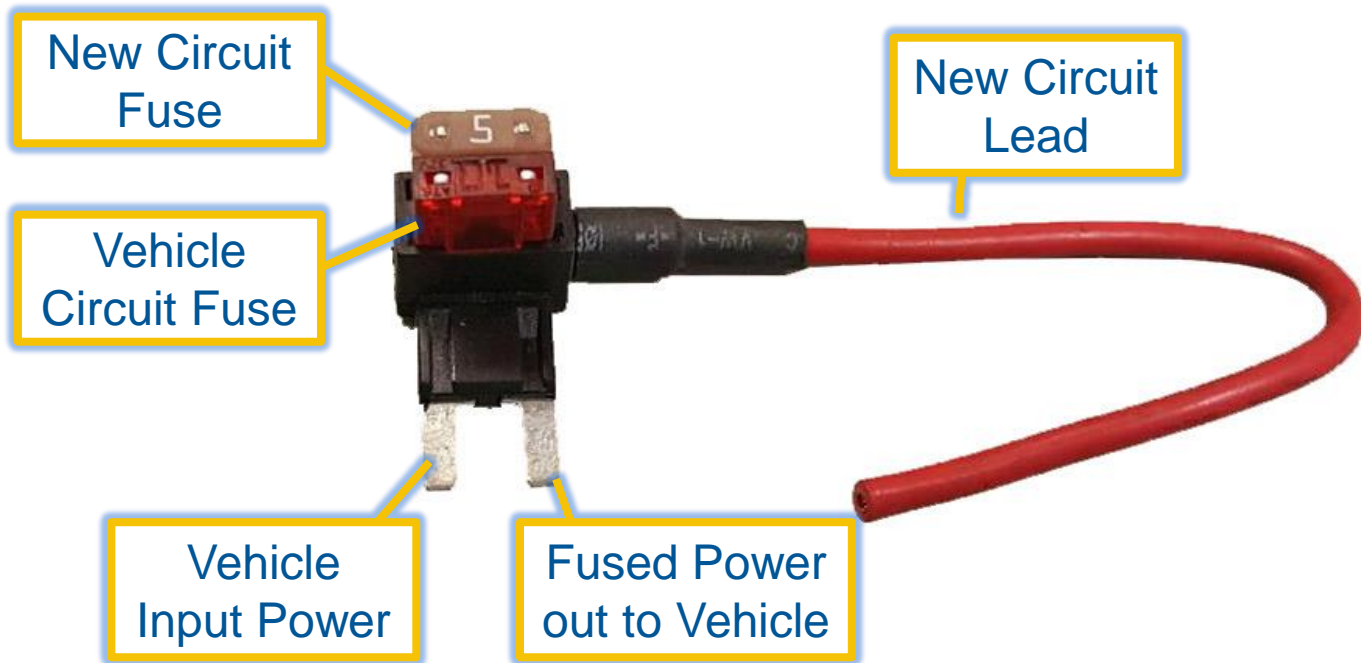
ALTERNATE CONNECTION FOR YEARS 2013-2016

1. Locate the blue 8-pin connector below and behind the fuse panel.

2. Connect the mating 8-pin adaptor; then connect that to the 2-pin main cable.



Add-a-Circuit Function



Power Connections

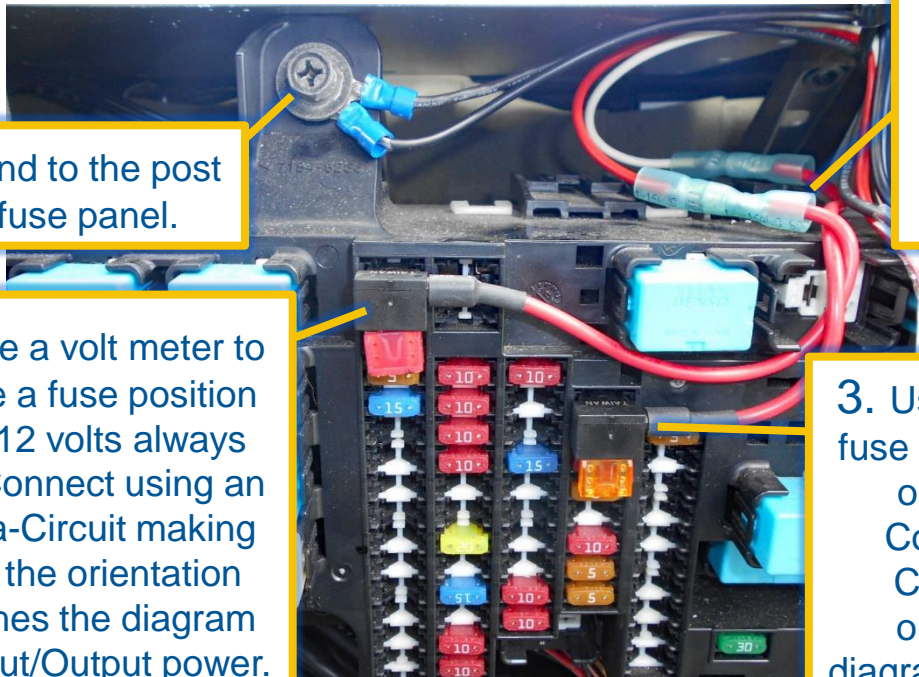
[Click here to view a video of this process.](#)

1. Connect the ground to the post holding the upper fuse panel.

2. Use a volt meter to locate a fuse position with 12 volts always ON. Connect using an Add-a-Circuit making sure the orientation matches the diagram for Input/Output power.

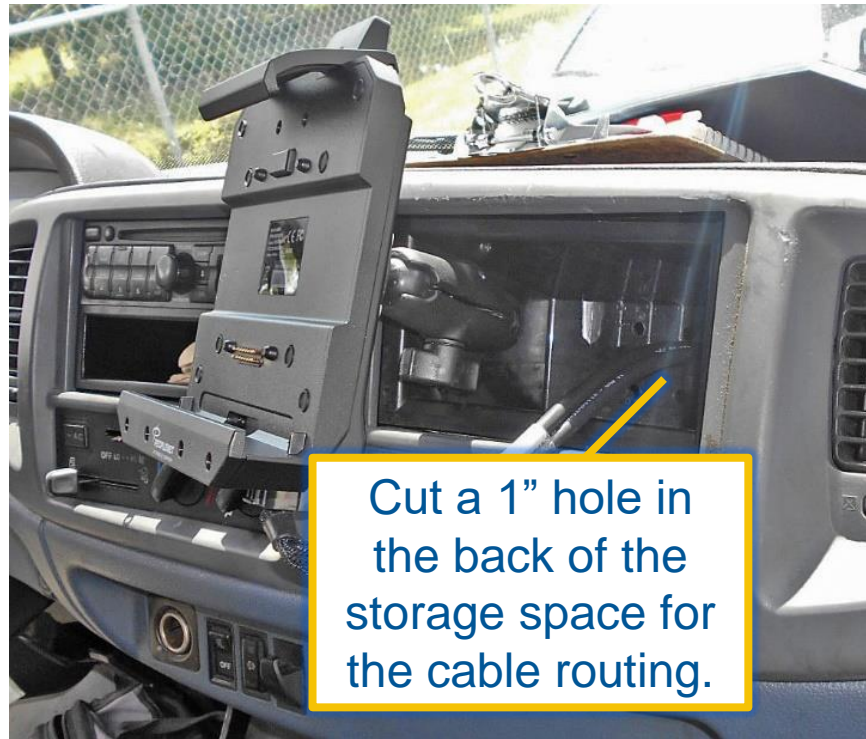
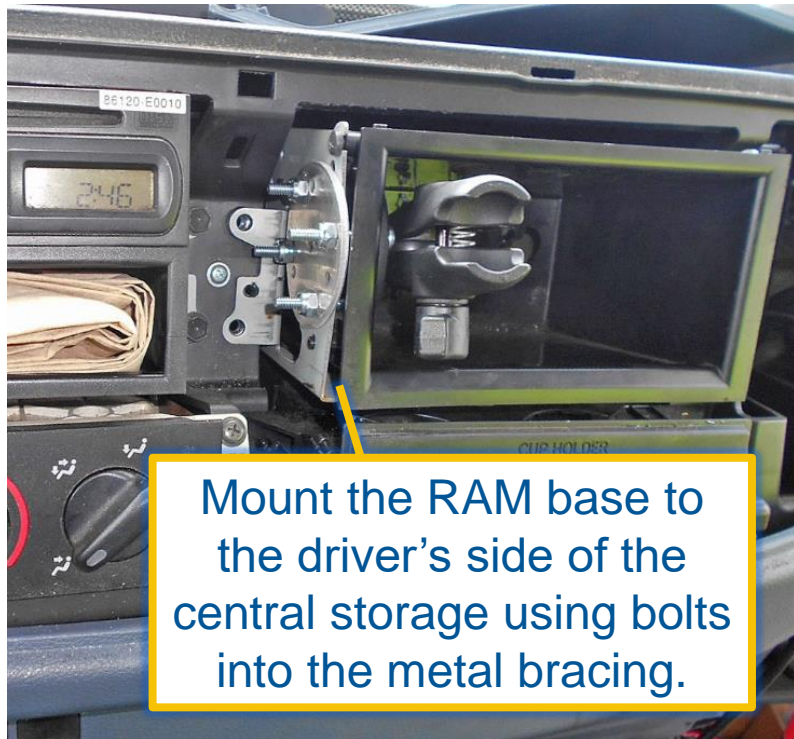
4. Splice the Always ON circuit to the red lead of the Power Assembly. Splice the Ignition-Only circuit to the white lead of the Power Assembly.

3. Use a volt meter to locate a fuse position with 12 volts only on when the key is ON. Connect using an Add-a-Circuit, making sure the orientation matches the diagram for Input/Output power.



Display Option 1

THERE ARE MULTIPLE WAYS TO MOUNT THE DISPLAY. THIS IS SHOWN AS AN OPTION TO CONSIDER.



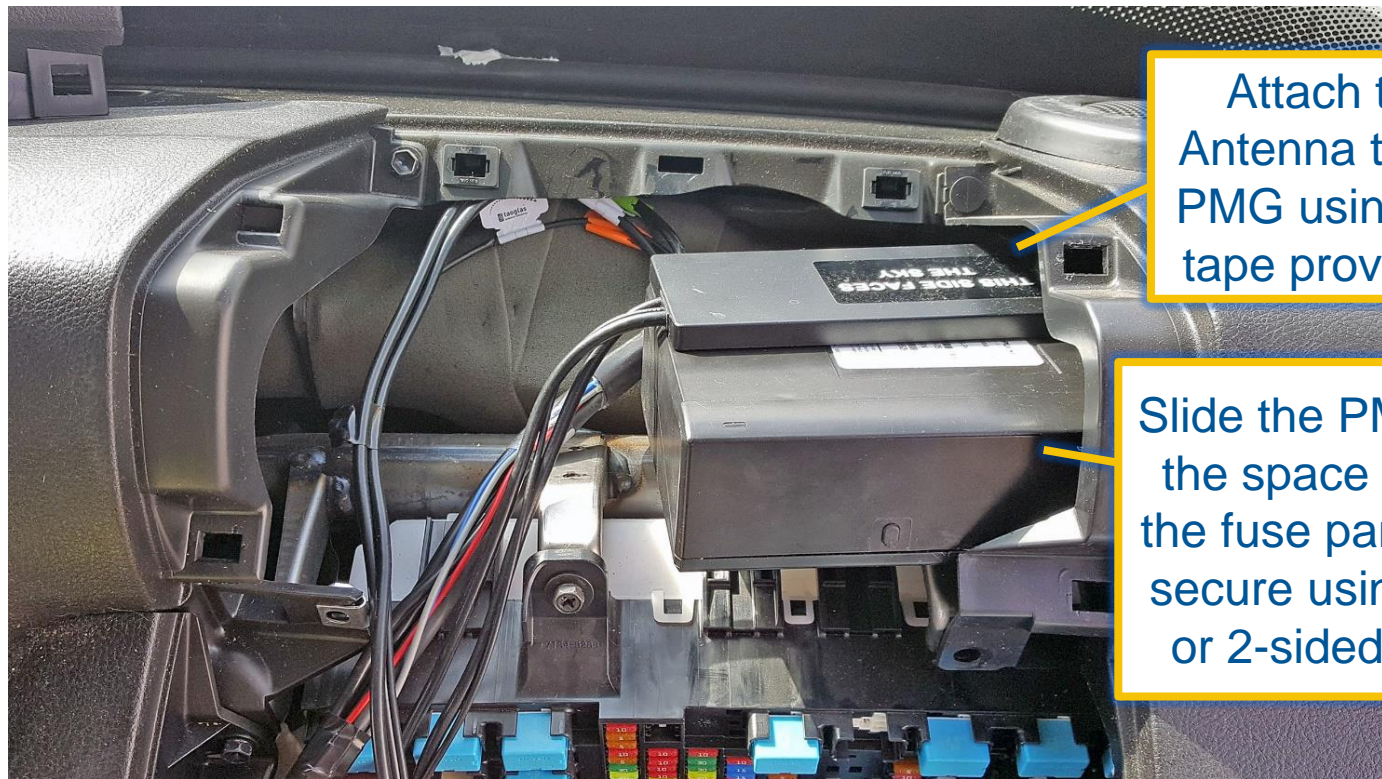
Display Option 2

THERE ARE MULTIPLE WAYS TO MOUNT THE DISPLAY. THIS IS SHOWN AS AN OPTION TO CONSIDER.



Mount the RAM base to the lower flat dash surface using bolts and a backing plate or large washers.

PMG and Antenna



Attach the Antenna to the PMG using the tape provided.

Slide the PMG into the space above the fuse panel and secure using a tie or 2-sided tape.