Three horizontal yellow lines of varying lengths, stacked vertically, located to the left of the title text.

Freightliner Century-Columbia-Glider PeopleNet Connected Gateway™ Install



Important Notes on Century-Columbia-Glider

- This design covered a number of years and variations, though the general install remained the same.
- The diagnostic port is behind the driver's seat. With the cable length limited by the engine data bus specifications, that limits where the PCG can mount.
 - No in-dash option is currently known, with just enough cable to reach the top of the driver's-side dash.
- Vehicles with a gray 6-pin diagnostic plug (roughly pre-2008) will require a 6-to-9 pin adapter to connect.
 - All vehicles with a 6-9 pin adapter should also have the white PCG lead connected to vehicle ignition to guarantee a clean boot-up. Devices may boot without the ignition wire, but it depends on the voltage fluctuations.
 - Vehicles with a black or green 9-pin diagnostic will not require the ignition connection.
- With Gliders, the engine data available will depend on the engine age/type.

Install Steps



- 1) Connect and mount the display.
- 2) Connect and mount the PCG.
- 3) Connect the display blue barrel and 2-pin power to the PCG Main Cable. Non-Trimble displays will not require the blue barrel.
- 4) Connect the PCG Main Cable to the vehicle or optional Y-Cable.
- 5) Connect the Y-Cable to the 6-9 Pin Adapter (Pre-2008).
- 6) Connect the Y-Cable or 6-9 to the vehicle (In-Dash Install).

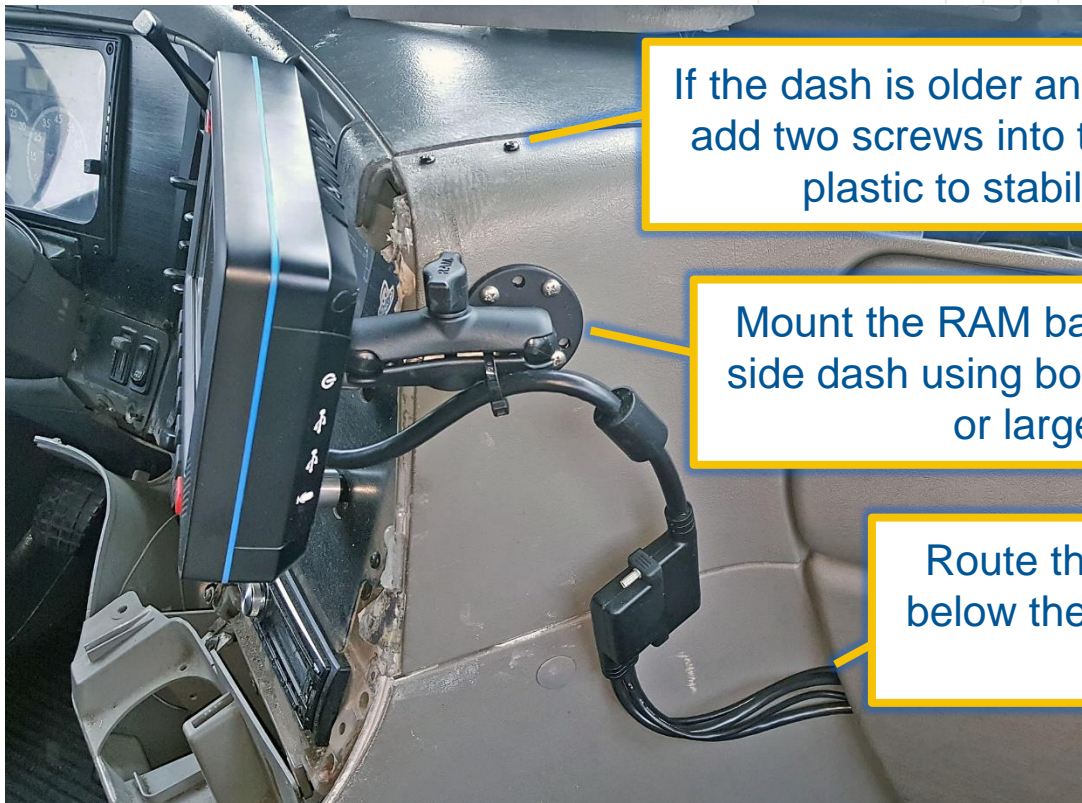
Install Overview



Installation Steps

- 1) Connect the PCG Main Cable to the vehicle diagnostic port.
- 2) Route the PCG cable under the driver's kick plate and up the side of the dash, making sure it is clear of the door and will not interfere with safe vehicle operation.
- 3) Clean a spot on top of the dash using an alcohol swab and a paper towel, then attach the PCG using the tape provided.
- 4) For pre-2008 vehicles (those with a 6-pin diagnostic) route the white ignition wire from the PCG to the key switch and connect.
- 5) Mount the display-See below for options and steps.
- 6) Route the display cable to the connectors on the PCG cable, then connect both the 2-pin power and blue barrel connections.
- 7) Bundle the cables so they cannot interfere with the safe operation of the vehicle.
- 8) Turn the vehicle key ON to boot the system, then follow the PCG Activation steps.

Display Mount



If the dash is older and cracked, add two screws into the heavy plastic to stabilize.

Mount the RAM base to the passenger's side dash using bolts and a backing plate or large washers.

Route the cable into the dash below the passenger pop panel if desired.

Diagnostic Connection

Connect the PCG Main Cable to the black connection on the Y-cable.

If you are not using the Y-cable, the PCG Main will connect directly to the vehicle diagnostic, with the 6-9 added for pre-2008.

Mount the green male 9-pin in place of the original.

Connect the 6-9 pin adapter to the vehicle (pre-2008).

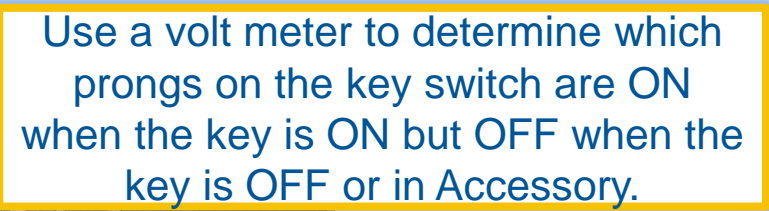
Connect the optional Y-Cable to the 6-9 pin adapter.

PCG Mount

Clean the top of the dash above the gauge cluster using alcohol and a paper towel then mount the PCG.



Route the cables down the side of dash.



Splice a fuse-holder to a female spade connector and connect. Fuse to 5 amps.

Splice the fuse-holder to an extension lead, route it the PCG, and splice to the PCG white wire.