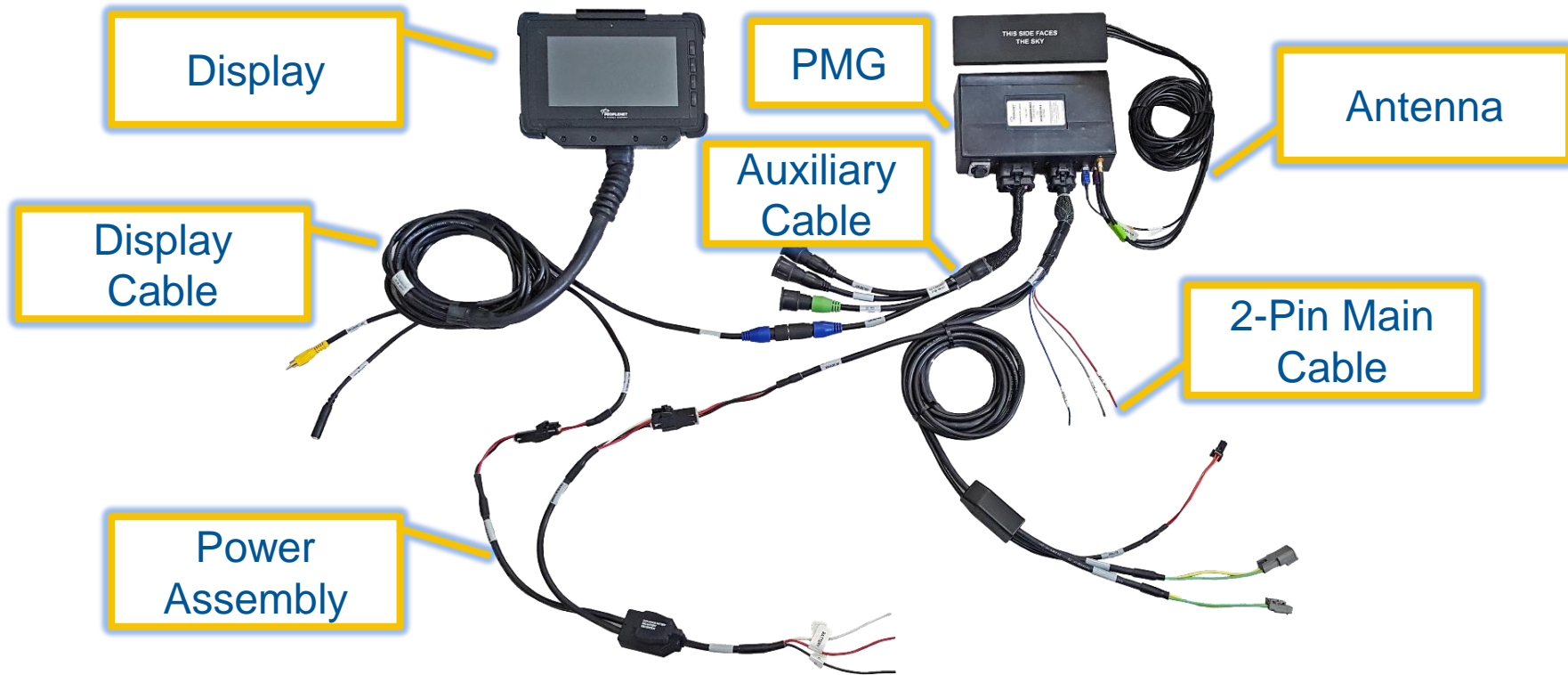


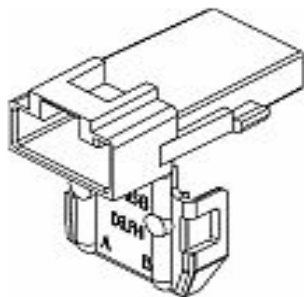
# 2018+ Mack Truck PeopleNet Mobile Gateway® Standard Install

# Hardware Overview



# Non-Trimble Parts Needed

Connector Housing  
2 Per Vehicle  
Aptiv part [12034344](#)



Power Pin  
3 Per Vehicle  
Aptiv part [12020116](#)

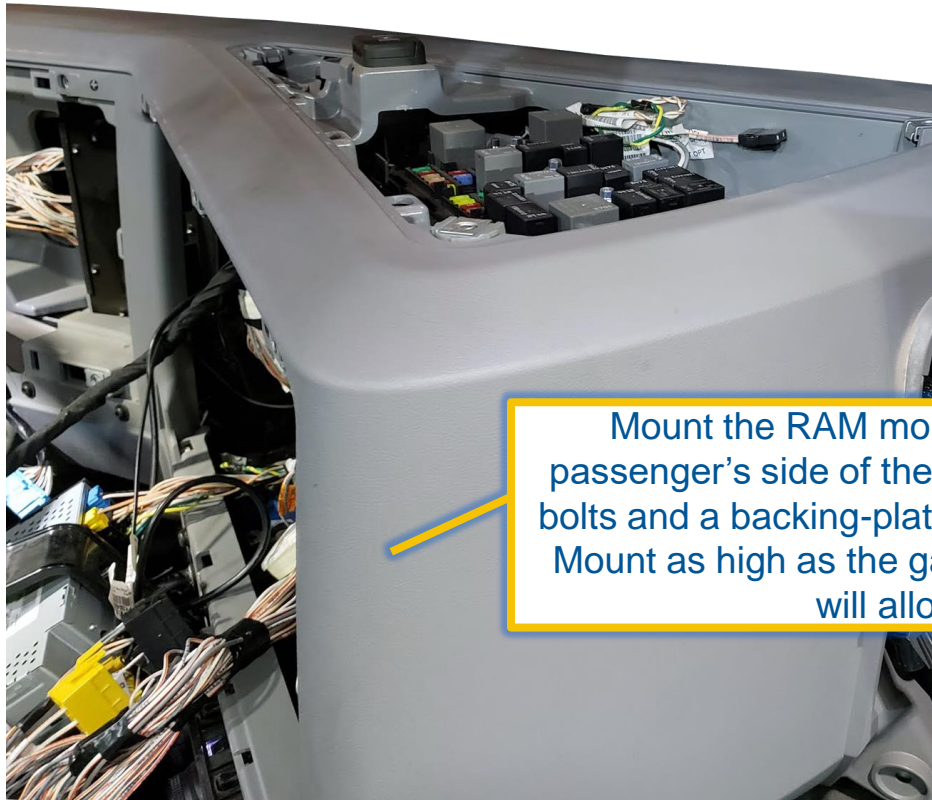


- New Macks provide spare Power/Ignition/Ground connections, but a non-destructive install requires special connectors.
- These can be purchased from a number of online sources: search on the part numbers for options.
- If no parts are available, you can follow the instructions below, but instead of direct connections you will cut the connectors off the vehicle and splice in the Power Assembly.

# Install Overview



# Display Mount



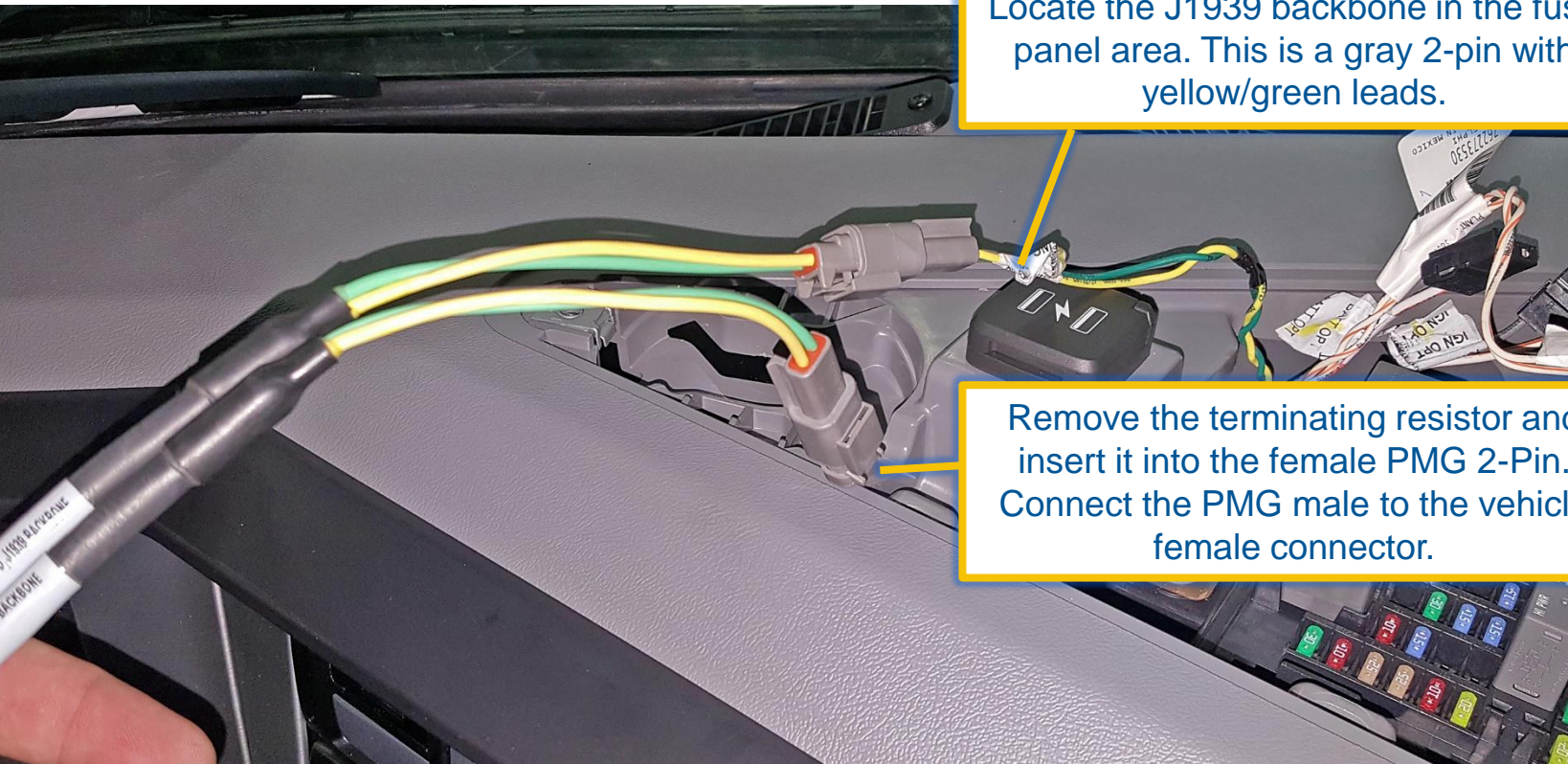
Mount the RAM mount base to the passenger's side of the center dash using bolts and a backing-plate or large washers. Mount as high as the gauge arrangement will allow.



# Engine Data

Locate the J1939 backbone in the fuse panel area. This is a gray 2-pin with yellow/green leads.

Remove the terminating resistor and insert it into the female PMG 2-Pin. Connect the PMG male to the vehicle female connector.



# Power Connections

Locate the “IGN OPT” and “BATT OPT” spares in the front of the fuse panel area.

Pin the Ignition Sense (white) to pin A of an Aptiv connector, matching the White/Orange on the vehicle side.

Pin the Constant Power (red) and Ground (black) to an Aptiv connector with the power in pin A, matching the White/Orange on the vehicle side.

As noted above, if no pins are available cut the connector ends from the vehicle and splice directly to the leads.

Add a 10 amp fuse to position F28 for the BATT power.  
Add a 5 amp fuse to position F32 for Ignition Sense.

# Antenna



Remove the passenger dash panel. Clean the top of the air-duct using alcohol and a clean paper-towel, then mount the antenna using the tape provided.



# PMG Mount

Mount the PMG in the forward space of the center dash. Secure it using the tape provided and a plastic tie.

